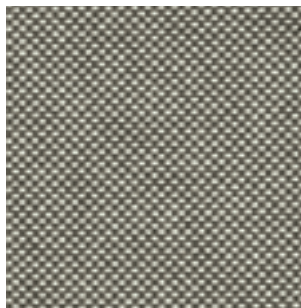


## TESSUTO kvadrat FIELD

kvadrat FIELD FABRIC | kvadrat FIELD TISSU | STOFF kvadrat FIELD | TEJIDO kvadrat FIELD | ТКАНЬ kvadrat FIELD



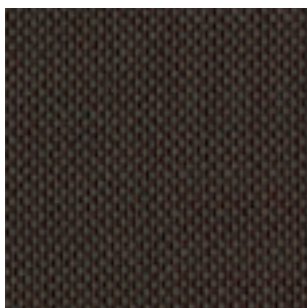
**TKF01** Sale & pepe | Salt & pepper | Sel & poivre | Salz & Pfeffer |  
Sal & pimienta | Соль и перец



**TKF02** Sabbia | Sand | Sable | Sand |  
Arena | Песочный



**TKF09** Tortora | Dove gray |  
Gris tourterelle | Taubengrau |  
Gris ceniciento | Серо-Коричневый



**TKF07** Corteccia | Bark | Écorce |  
Braun-grün | Corteza |  
Коричневый - Зелёный



**TKF08** Bordeaux | Bordeaux |  
Bordeaux | Bordeaux | Burdeos | Бордо



**TKF06** Blu indaco | Indigo blue |  
Bleu indigo | Blau | Azul indigo |  
Синий индиго

## TESSUTO kvadrat CODA

kvadrat CODA FABRIC | kvadrat CODA TISSU | STOFF kvadrat CODA | TEJIDO kvadrat CODA | ТКАНЬ kvadrat CODA



**TKC03** Celeste | Light blue | Bleu ciel | Hell blau | Celeste | Голубой



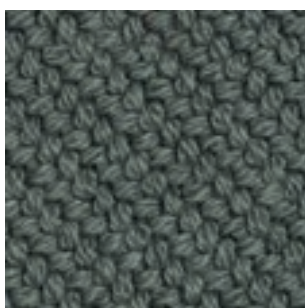
**TKC01** Mandorla | Almond | Amande |  
Mandel | Almendra | Миндаль



**TKC02** Giallo senape |  
Mustard yellow | Moutarde |  
Senf | Amarillo mostaza |  
Желтая горчица



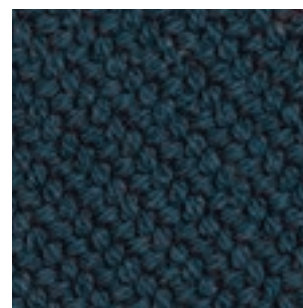
**TKC04** Salme | Salmon | Saumon |  
Lachs | Salmón | Семга



**TKC05** Verde salvia | Sage green |  
Vert sauge | Salbei grün |  
Verde salvia | Зеленый шалфей



**TKC07** Talpa | Grey | Gris | Grau |  
Gris | Серовато-Коричневый



**TKC06** Denim | Denim | Bleu denim |  
Denim | Denim | Деним

## TESSUTO kvadrat FIELD

kvadrat FIELD FABRIC | kvadrat FIELD TISSU | STOFF kvadrat FIELD | TEJIDO kvadrat FIELD | ТКАНЬ kvadrat FIELD

### COMPOSIZIONE | COMPOSITION

100% Trevira® CS

### SIMBOLOGIA | LIST OF SYMBOLS



### RITIRO STIMATO | ESTIMATED SHRINKAGE

2%

### ALTEZZA | WIDTH

140 cm | 55.1 inch

### SOLIDITÀ DEL COLORE ALLA LUCE | COLOUR FASTNESS TO LIGHT

5/7 ISO 105 B02

### RESISTENZA AL PILLING | PILLING RESISTANCE

4/5 EN ISO 12945

### RESISTENZA ALL'ABRASIONE | ABRASION RESISTANCE

100.000 cicli-rubs martindale EN ISO 12947



### IGNIFUGO | FIRE RETARDANT

T UNI 9177 Class 1 DE/EU DIN 4102 B1

GB BS 5852 Crib 5 EU EN 1021-1/2

FR NF P 92 507 M1

AT Önorm B1/Q1

U.S.A US Cal. Bull. 117-2013 IMO FTP Code 2010:Part 8



### METODO DI PULIZIA | CLEANING INSTRUCTIONS

Per la pulizia, utilizzare un panno di cotone inumidito con acqua.

For cleaning, use a cloth dampened with water.

## TESSUTO kvadrat CODA

kvadrat CODA FABRIC | kvadrat CODA TISSU | STOFF kvadrat CODA | TEJIDO kvadrat CODA | ТКАНЬ kvadrat CODA

### COMPOSIZIONE | COMPOSITION

90% lana vergine | virgin wool | laine vierge-reine Schnurwolle | lana virgin | Натуральная шерсть

10% nylon | nylon | nylon | nylon | nylon | Нейлон

### SIMBOLOGIA | LIST OF SYMBOLS



### ALTEZZA | WIDTH

140 cm | 55.1 inch

### SOLIDITÀ DEL COLORE ALLA LUCE | COLOUR FASTNESS TO LIGHT

5/7 ISO 105 B02

### RESISTENZA AL PILLING | PILLING RESISTANCE

4 EN ISO 12945

### RESISTENZA ALL'ABRASIONE | ABRASION RESISTANCE

100.000 cicli-rubs martindale EN ISO 12947



### IGNIFUGO | FIRE RETARDANT

IT UNI 9175 11M DE/EU DIN 4102 B2 GB BS 5852 part 1 EU EN 1021-1/2

FR NF D 60 013

AT Önorm B2/Q1

U.S.A US Cal. Bull. 117-2013

NFPA 260

IMO FTP Code 2010:Part 8



### METODO DI PULIZIA | CLEANING INSTRUCTIONS

Rimuovere polvere e residui utilizzando un aspirapolvere a bassa intensità.

Remove dust and dirt using a low-power vacuum.

**TESSUTO MAMBO**

MAMBO FABRIC | TISSU MAMBO | STOFF MAMBO | TEJIDO MAMBO | ТКАНЬ MAMBO

**BONTEMPI**  
CASA



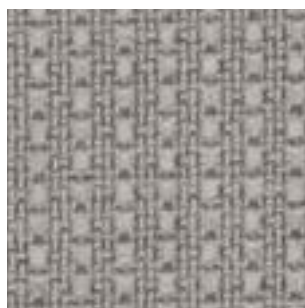
**TMA07** Viola oro | *Violet gold | Violet or | Violet gold | Violeta oro | Фиолетово-золотой*



**TMA01** Bianco | *White | Blanc | Weiß | Blanco | Белый*



**TMA02** Ghiaccio | *Ice | Glace | Eis | Hielo | Лед*



**TMA03** Grigio chiaro | *Light grey | Gris clair | Hell grau | Gris claro | Светло-серый*



**TMA04** Tortora | *Dove grey | Tourterelle | Taubengrau | Gris ceniciento | Серо-бежевый*



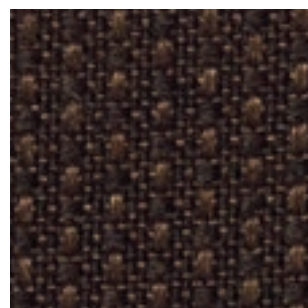
**TMA05** Senape | *Mustard | Moutarde | Senffarbe | Mostaza | Горчица*



**TMA06** Corallo oro | *Coral gold | Corail or | Koralle gold | Coral oro | Кораллово-золотой*



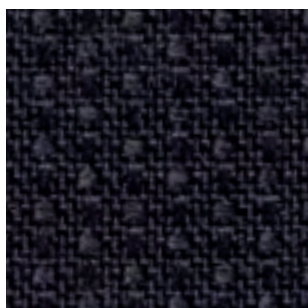
**TMA11** Nero oro | *Black gold | Noir or | Schwarz gold | Negro oro | Черное золото*



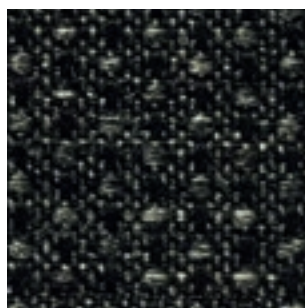
**TMA10** Testa di moro | *Dark brown | Marron foncé | Dunkelbraun | Marrón oscuro | Темно-коричневый*



**TMA08** Turchese | *Turquoise | Turquoise | Türkis | Turquesa | Бирюза*



**TMA09** Blu di Prussia | *Prussian blue | Bleu de Prusse | Preußisch blau | Azul de Prusia | Прусский синий*



**TMA12** Antracite | *Anthracite | Anthracite | Anthrazit | Antracita | Антрацит*

# TESSUTO MAMBO

MAMBO FABRIC | TISSU MAMBO | STOFF MAMBO | TEJIDO MAMBO | ТКАНЬ MAMBO

## COMPOSIZIONE | COMPOSITION

100% polipropilene | *polypropylene* | *polypropylène* | *Polypropylen* | *polipropileno* | *полипропилен*

## SIMBOLOGIA | LIST OF SYMBOLS



## RITIRO STIMATO | ESTIMATED SHRINKAGE

0%

## ALTEZZA | WIDTH

140 cm | 55.1 inch

## SOLIDITÀ DEL COLORE ALLA LUCE | COLOUR FASTNESS TO LIGHT

xeno ISO 105 B02

4/5

## SOLIDITÀ DEL COLORE ALLO SFREGAMENTO | COLOUR FASTNESS TO RUBBING

crockmeter ISO 105 X12

secco-dry 5

umido-wet 4/5

## RESISTENZA AL PILLING | PILLING RESISTANCE

ISO 12945-2

4/5

## RESISTENZA ALLO SCORRIMENO FILI | SEAM SLIPPAGE

ISO 13936-2

1,50 mm

## RESISTENZA ALL'ABRASIONE | ABRASION RESISTANCE

martindale ISO 12947-2

≥ 33.000 cicli-rubs



## FILATO IDROREPELENTE | WATERPROOF YARN

La collezione è impreziosita da un trattamento idrorepellente che ne garantisce la facile pulizia.  
*Collection is enhanced by waterproof treatment in order to allow easy cleaning.*



## ANTISTATICO | ANTISTATIC



## ANALLERGICO/ANTIBATTERICO | HYPOALLERGENIC/ANTIBACTERIAL



## IRRESTRINGIBILE | NO-SHRINKAGE



## IGNIFUGO | FIRE RETARDANT

IT UNI 9175 Class 1IM

EU EN 1021-1:2006

EN 1021-2:2006

FR NF D 60-013:2006 (art. AM 18)

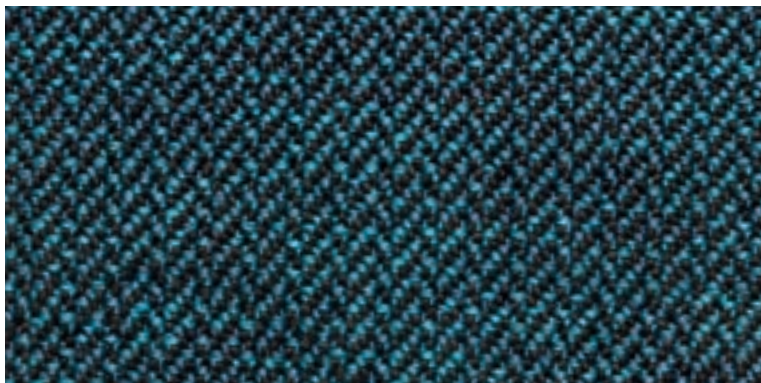
U.S.A CALIFORNIA TB 117:2013

NAUTICO FTP code 307(88):10 annex 1 part 8

# TESSUTO LULÙ

LULÙ FABRIC | TISSU LULÙ | STOFF LULÙ | TEJIDO LULÙ | ТКАНЬ LULÙ

BONTEMPI  
CASA



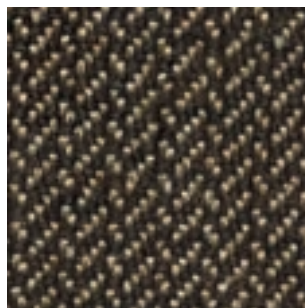
**TLU09** Petrolio | *Petroleum* | *Pétrole* | *Ölfarbe* | *Petróleo* | *Нефть*



**TLU01** Ghiaccio | *Ice* | *Glace* | *Eis* | *Hielo* | *Лед*



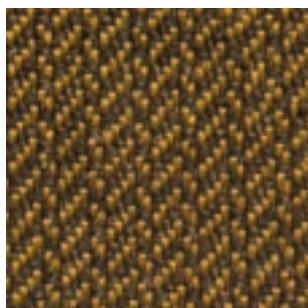
**TLU02** Tortora | *Dove grey* | *Tourterelle* | *Taubengrau* | *Gris ceniciento* | *Серо-бежевый*



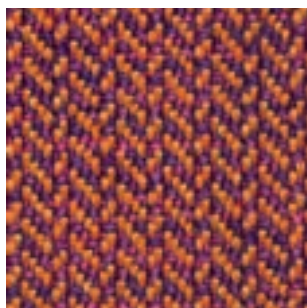
**TLU04** Testa di moro | *Dark brown* | *Marron foncé* | *Dunkelbraun* | *Marrón oscuro* | *Темно-коричневый*



**TLU03** Sale & pepe | *Salt & pepper* | *Sel & poivre* | *Salz & Pfeffer* | *Sal & pimienta* | *Соль и перец*



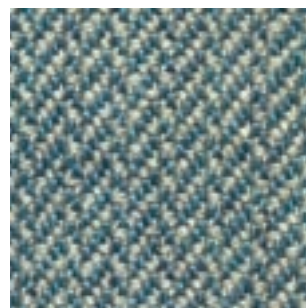
**TLU05** Senape | *Mustard* | *Moutarde* | *Senffarbe* | *Mostaza* | *Горчица*



**TLU06** Arancio viola | *Orange violet* | *Orange pourpre* | *Orange violett* | *Naranja violeta* | *Оранжево-фиолетовый*



**TLU07** Viola grigio | *Violet grey* | *Gris violet* | *Violett grau* | *Violeta gris* | *Фиолетово-серый*



**TLU08** Azzurro polvere | *Powder blue* | *Bleu pastel* | *Puderblau* | *Azul polvo* | *Синий порошок*

# TESSUTO LULÙ

LULÙ FABRIC | TISSU LULÙ | STOFF LULÙ | TEJIDO LULÙ | ТКАНЬ LULÙ

## COMPOSIZIONE | COMPOSITION

100% polipropilene | *polypropylene* | *polypropylène* | *Polypropylen* | *polipropileno* | *полипропилен*

## SIMBOLOGIA | LIST OF SYMBOLS



## RITIRO STIMATO | ESTIMATED SHRINKAGE

0%

## ALTEZZA | WIDTH

140 cm | *55.1 inch*

## SOLIDITÀ DEL COLORE ALLA LUCE | COLOUR FASTNESS TO LIGHT

xeno ISO 105 B02

4/5

## SOLIDITÀ DEL COLORE ALLO SFREGAMENTO | COLOUR FASTNESS TO RUBBING

crockmeter ISO 105 X12

secco-dry 5

umido-wet 4/5

## RESISTENZA AL PILLING | PILLING RESISTANCE

ISO 12945-2

4/5

## RESISTENZA ALLA STRAMATURA | SEAM SLIPPAGE

ISO 12945-2

1,50 mm | *0.059 inch*

## RESISTENZA ALL'ABRASIONE | ABRASION RESISTANCE

martindale ISO 12947-2

≥ 40.000 cicli-rubs



## FILATO IDROREPELENTE | WATERPROOF YARN

La collezione è impreziosita da un trattamento idrorepellente che ne garantisce la facile pulizia.  
*Collection is enhanced by waterproof treatment in order to allow easy cleaning.*



## ANTISTATICO | ANTISTATIC



## ANALLERGICO/ANTIBATTERICO | HYPOALLERGENIC/ANTIBACTERIAL



## IRRESTRINGIBILE | NO-SHRINKAGE



## IGNIFUGO | FIRE RETARDANT

IT UNI 9175 Class 11M

EU EN 1021-1:2006

EN 1021-2:2006

FR NF D 60-013:2006 (art. AM 18)

U.S.A CALIFORNIA TB 117:2013

NAUTICO FTP code 307(88):10 annex 1 part 8

## TESSUTO OUTDOOR



OUTDOOR FABRIC | TISSU D'EXTERIEUR | OUTDOOR BEZÜGE | TEJIDO DE EXTERIOR |  
ТКАНЬ ДЛЯ ИСПОЛЬЗОВАНИЯ ВНЕ ПОМЕЩЕНИЙ

**BONTEMPI**  
CASA



**TOU04** Grigio melange | *Mélange grey* | *Gris melange* | *Melange Grau* |  
*Gris jaspeado* | Серый меланж



**TOU01** Vaniglia | *Vanilla* | *Vanille* |  
*Vanilla Farbe* | *Vainilla* | Ваниль



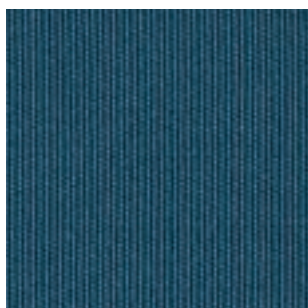
**TOU02** Sabbia | *Sand* | *Sable* |  
*Sand* | *Arena* | Песок



**TOU03** Castagna | *Chestnut brown* |  
*Marron châtaigne* | *Kastanienbraun* |  
*Castiño* | Каштан



**TOU05** Antracite | *Anthracite* |  
*Anthracite* | *Anthrazit* |  
*Antracita* | Антрацит



**TOU06** Azzurro polvere | *Blue Grey* |  
*Gris Bleu* | *Grau Blau* |  
*Azul polvo* | Синий порошок



**TOU07** Blu navy | *Blue navy* |  
*Bleu marine* | *Ultramarinblau* |  
*Azul Navy* | Темно-синий



3 TESSUTO OUTDOOR

## TESSUTO OUTDOOR

OUTDOOR FABRIC | TISSU D'EXTERIEUR | OUTDOOR BEZÜGE | TEJIDO DE EXTERIOR |  
ТКАНЬ ДЛЯ ИСПОЛЬЗОВАНИЯ ВНЕ ПОМЕЩЕНИЙ

### COMPOSIZIONE | COMPOSITION

100% fibra acrilica | acrylic fiber | fibre acrylique | Acrylfaser | fibra acrilica | акриловые волокна

### SIMBOLOGIA | LIST OF SYMBOLS



### RITIRO STIMATO | ESTIMATED SHRINKAGE

0%

### ALTEZZA | WIDTH

160 cm | 63 inch



### SOLIDITÀ DEL COLORE ALLE INTEMPERIE | COLOUR FASTNESS TO BAD WEATHER

UNI EN ISO 105 B 04

7/8



### SOLIDITÀ DELLE TINTE ALL' ACQUA CLORATA | COLOUR FASTNESS TO CHLORINATED WATER

UNI EN ISO 105 E 03

4/5



### SOLIDITÀ DELLE TINTE ALL' ACQUA DI MARE | COLOUR FASTNESS TO SEA WATER

UNI EN ISO 105 E 02

4/5 - 5



### ADATTO USO NAVALE | SUITABLE FOR NAVAL USE

ISO 12945-2

1,50 mm | 0.059 inch



### ADATTO USO MEDICO | SUITABLE FOR MEDICAL USE



### IGNIFUGO | FIRE RETARDANT

EU EN1021-1:2006

EN1021-2:2006

GB BS 5852-0:1979 (sigarette-cigarette)

BS 5852-1:1979 (fiammifero-match)

U.S.A CALIFORNIA TB 117:2013

NAUTICO IMO MSC. 370 (88)



### FINISSAGGIO | FINISHING

Trattamento Teflon anti-macchia e anti-muffa.

Teflon with stain and mildew-resistant treatment.



### METODO DI PULIZIA | CLEANING INSTRUCTIONS

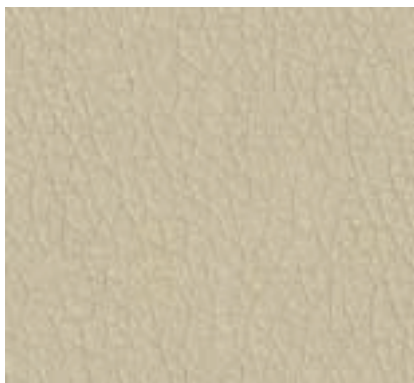
Per la pulizia utilizzare un panno di cotone umido d'acqua.

For cleaning, use a cotton cloth dampened with water.

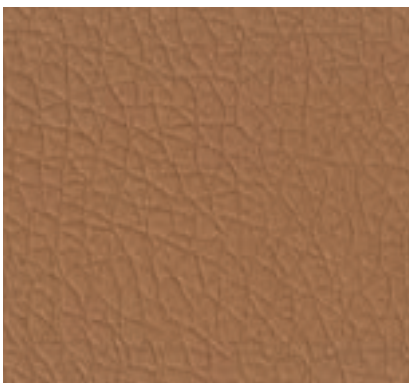


# PELLE ECOLOGICA PREMIUM

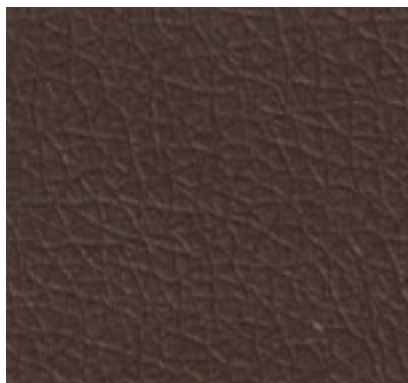
PREMIUM ECO-LEATHER | CUIR ECO PREMIUM | KUNSTLEDER PREMIUM | ECOPIEL PREMIUM | ЭКОЛОГИЧЕСКАЯ КОЖА PREMIUM



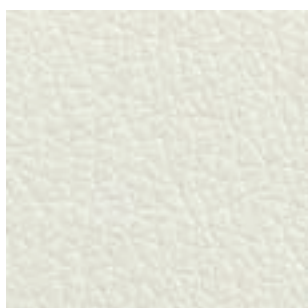
**TRP12** Beige | *Beige | Beige | Beige | Beige* | Беж



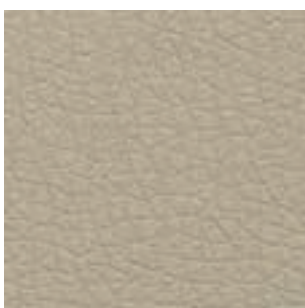
**TRP08** Biscotto | *Biscuit | Biscuit | Biskuit | Biscocho* | Бисквит



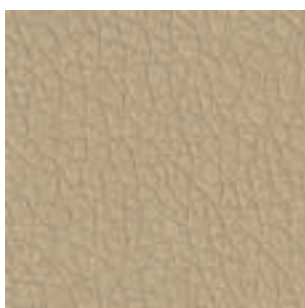
**TRP17** Mogano | *Mahogany | Acajou | Rot Braun | Saaba* | Красный-коричневый



**TRP04** Bianco | *White | Blanc | Weiß | Blanco* | Белый



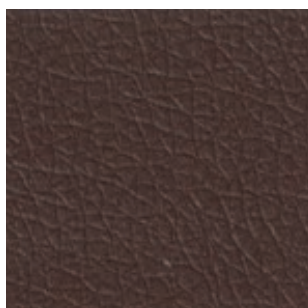
**TRP06** Sabbia | *Sand | Sable | Sand | Arena* | Песочный



**TRP10** Grano | *Wheat | Ble | Korn | Trigo* | Зерно



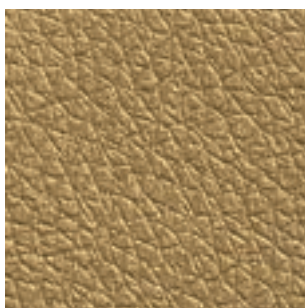
**TRP05** Fango | *Mud | Vase | Schlamm | Barro* | Шлам



**TRP07** Cioccolato | *Chocolate | Chocolat | Schokolade | Chocolate* | Шоколад



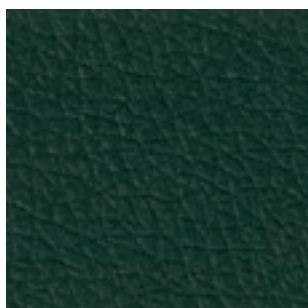
**TRP09** Curry | *Curry | Curry | Currypulver | Curry* | Карпу



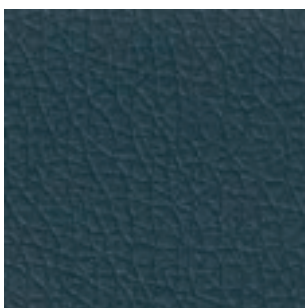
**TRP11** Oro | *Gold | Or | Gold | Oro* | Золото



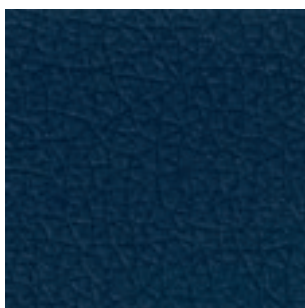
**TRP13** Bronzo Dorato | *Golden Bronze | Bronze Dore | Bronze Gold | Bronze Dorado* | Золотая Бронза



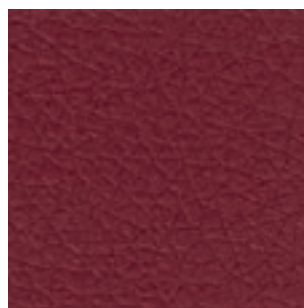
**TRP18** Verde Bosco | *Green Forest | Vert Foret | Wald Grün | Verde Bosque* | Лесной Зелёный



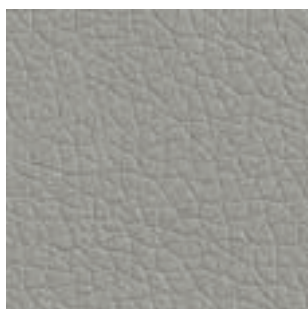
**TRP14** Avio | *Avio Blue | Avio | Air Force Blau | Azul Raf* | Авиационный Синий



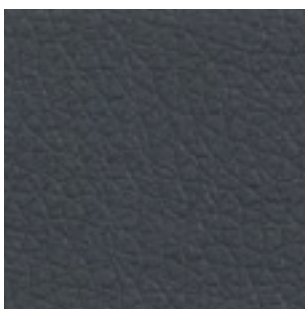
**TRP15** Blu | *Blue | Bleu | Blau | Azul* | Синий



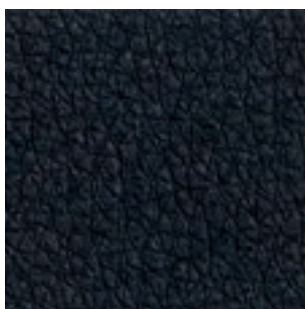
**TRP16** Amaranto | *Amaranth | Amarante | Amaranth | Amaranth* | Амарант



**TRP03** Grigio | *Grey | Gris | Grau | Gris* | Серый



**TRP02** Antracite | *Anthracite | Anthracite | Anthrazit | Antracita* | Антрацит



**TRP01** Nero | *Black | Noir | Schwarz | Negro* | Чёрный

# PELLE ECOLOGICA PREMIUM

PREMIUM ECO-LEATHER | CUIR ECO PREMIUM | KUNSTLEDER PREMIUM | ECOPIEL PREMIUM | ЭКОЛОГИЧЕСКАЯ КОЖА PREMIUM

## COMPOSIZIONE | COMPOSITION

68% pvc | pvc | pvc | pvc | pvc | n8x

2% poliuretano | polyurethane | polyuréthane | Polyurethan | poliuretano | полиуретан

30% cotone | cotton | coton | Baumwolle | algodón | хлопок

## SIMBOLOGIA | LIST OF SYMBOLS



## ALTEZZA | WIDTH

± 140 cm | ± 55.1 inch

## SPESSORE | THICKNESS

± 1,0 mm | ± 0.04 inch

## PESO | WEIGHT

± 640 g/mq

## SOLIDITÀ DEL COLORE ALLO SFREGAMENTO | COLOUR FASTNESS TO RUBBING

ISO 105 X12

secco-dry 4/5

umido-wet 4/5

## SOLIDITÀ DEL COLORE ALLA LUCE | COLOUR FASTNESS TO LIGHT

xeno ISO 105 B06

≤ 6

## RESISTENZA ALL'ABRASIONE | ABRASION RESISTANCE

ISO 5470-2

> 150.000 cicli/rubs

## RESISTENZA ALLA ROTTURA | TENSILE STRENGTH

ISO 1421

ordito/warp 600 N

trama/weft 400 N



## RESISTENZA AL FUOCO | FIRE RESISTANCE

11M - UNI 9175

EN 1021 part 1/2

BS 5852 part 1

NFPA 260

California TB 117:2013

IMO MED - FTP Code 307 part 8



## METODO DI PULIZIA | CLEANING INSTRUCTIONS

Per la pulizia utilizzare un panno di cotone umido e detergente neutro diluito con acqua.

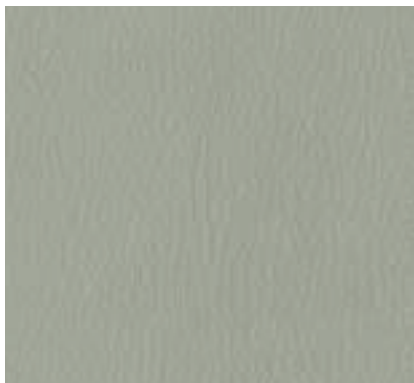
For cleaning, use a soft damp cloth and gentle detergent diluted with water.

## SOSTENIBILITÀ | SUSTAINABILITY

Esente da ftalati | free from phthalates

# PELLE ECOLOGICA

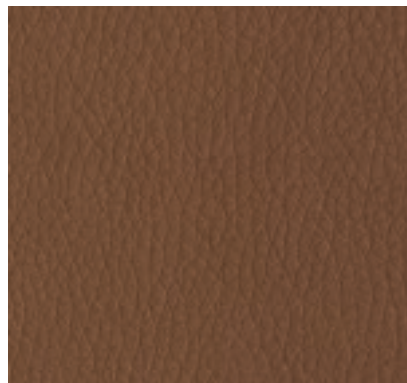
ECO LEATHER | CUIR ÉCOLOGIQUE | KUNSTLEDER | ECOPIEL | ЭКОЛОГИЧЕСКАЯ КОЖА



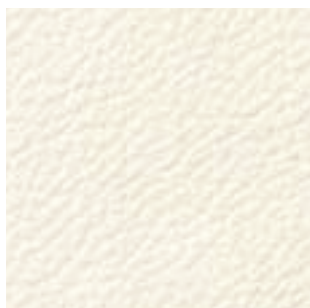
**TR521** Verde chiaro | *Light green* | *Vert clair* | *Hell Grün* | *Verde claro* | *Светло-зелёный*



**TR518** Sabbia | *Sand* | *Sable* | *Sand* | *Arena* | *Песочный*



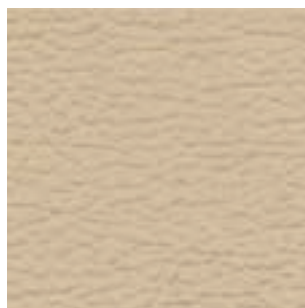
**TR523** Nocciola | *Hazelnut* | *Noisette* | *Haselnuß* | *Avellana* | *Орех*



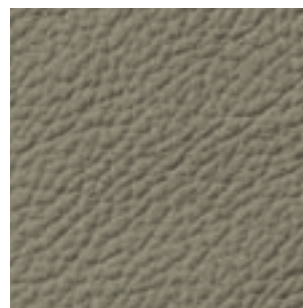
**TR505** Bianco | *White* | *Blanc* | *Weiß* | *Blanco* | *Белый*



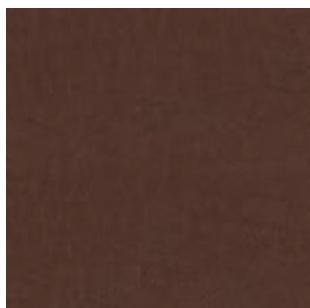
**TR500** Avorio | *Ivory* | *Ivoire* | *Elfenbeinfarbe* | *Marfil* | *Слоновая кость*



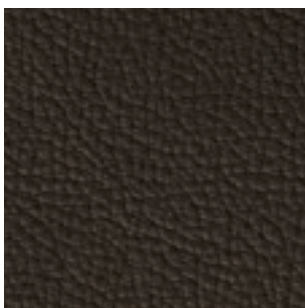
**TR501** Beige | *Beige* | *Beige* | *Beige* | *Beige* | *Beige* | *беж*



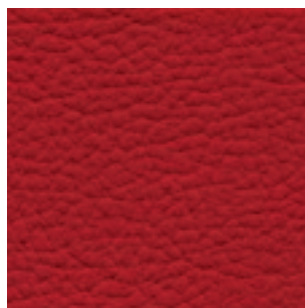
**TR519** Fango | *Mud* | *Vase* | *Schlammfarbig* | *Barro* | *Серо-коричневый*



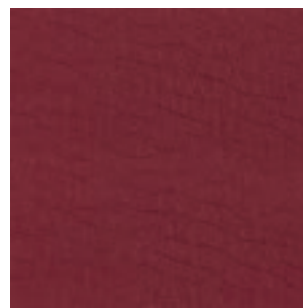
**TR510** Marrone | *Brown* | *Marron* | *Braun* | *Marrón* | *Коричневый*



**TR503** Testa di moro | *Dark brown* | *Marron foncé* | *Dunkelbraun* | *Marrón oscuro* | *Темно-коричневый*



**TR502** Rosso | *Red* | *Rouge* | *Rot* | *Rojo* | *Красный*



**TR509** Bordeaux | *Bordeaux* | *Bordeaux* | *Bordeaux* | *Bordeaux Rot* | *Burdeos* | *Бордо*



**TR525** Giallo | *Yellow* | *Jaune* | *Gelb* | *Amarillo* | *Жёлтый*



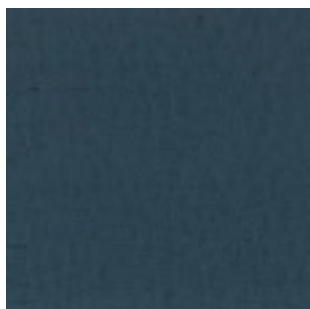
**TR522** Cipria | *Old Rose* | *Vieux Rose* | *Alte Rose* | *Rojo Viejo* | *Лудра*



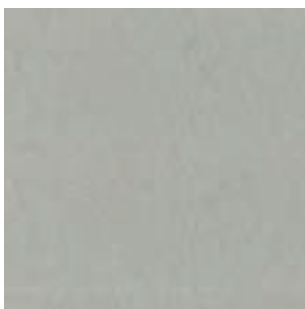
**TR524** Verdone | *Dark green* | *Vert foncé* | *Dunkelgrün* | *Verde oscuro* | *Тёмно-зелёный*



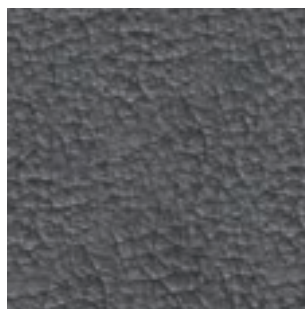
**TR514** Blu | *Blue* | *Bleu* | *Blau* | *Azul* | *Синий*



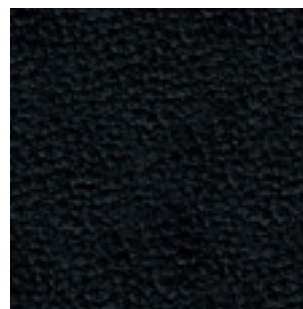
**TR515** Blu cobalto | *Cobalt blue* | *Bleu cobalt* | *Kobaltblau* | *Azul cobalto* | *Синий кобальт*



**TR516** Grigio chiaro | *Light grey* | *Gris clair* | *Hell grau* | *Gris claro* | *Светло-серый*



**TR517** Antracite | *Anthracite* | *Anthracite* | *Anthracite* | *Anthrazit* | *Antracita* | *Антрацит*



**TR504** Nero | *Black* | *Noir* | *Schwarz* | *Negro* | *Черный*

**N.B.:** I campioni colore sono da considerarsi indicativi per ciascun prodotto in quanto il colore può subire variazioni in funzione degli spessori e della composizione dei materiali utilizzati | *Use card as example, colours may change according to materials used.*

# PELLE ECOLOGICA

ECO LEATHER | CUIR ÉCOLOGIQUE | KUNSTLEDER | ECOPIEL | ЭКОЛОГИЧЕСКАЯ КОЖА

## COMPOSIZIONE | COMPOSITION

50% poliuretano | polyurethane | polyuréthane | Polyurethan | poliuretano | полиуретан  
33% cotone | cotton | coton | Baumwolle | algodón | хлопок  
17% poliestere | polyester | polyester | poliéster | полиэстер

## SIMBOLOGIA | LIST OF SYMBOLS



## RITIRO STIMATO | ESTIMATED SHRINKAGE

0%

## ALTEZZA | WIDTH

140 cm | 55.1 inch

## SPESSORE | THICKNESS

1,0 mm | 0.04 inch

## SOLIDITÀ DEL COLORE ALLO SFREGAMENTO | COLOUR FASTNESS TO RUBBING

crockmeter ISO 105 X12

secco-dry 4/5

umido-wet 4/5

## SOLIDITÀ DEL COLORE ALLA LUCE ARTIFICIALE AD ALTE TEMPERATURE

COLOUR FASTNESS TO ARTIFICIAL LIGHT AT HIGH TEMPERATURE

4/5 EN ISO 12945

xeno ISO 105 B06

5

## SOLIDITÀ DEL COLORE ALLA LUCE ARTIFICIALE | COLOUR FASTNESS TO ARTIFICIAL LIGHT

xeno ISO 105 B02

4/5

## RESISTENZA ALL'ABRASIONE | ABRASION RESISTANCE

bally - UNI EN 13512

80.000 cicli-rubs

## RESISTENZA ALLE FLESSIONI DOPO JUNGLE TEST (H336)

RESISTANCE TO FLEXURES AFTER JUNGLE TEST (H336)

UNI 4818/92 P.29A + UNI EN 13512

50.000 cicli-rubs



## IGNIFUGO | FIRE RETARDANT

USA California Bull 117 sez.E



## METODO DI PULIZIA | CLEANING INSTRUCTIONS

Per la pulizia utilizzare un panno di cotone umido e detergente neutro diluito con acqua.

For cleaning, use a soft damp cloth and gentle detergent diluted with water.

## TESSUTO NORDIC

NORDIC FABRIC | TISSU NORDIC | STOFF NORDIC | TEJIDO NORDIC | NORDIC ТКАНЬ



**TENO001** Stalattite | *Stalactite* | *Stalactites* | *Stalakit* | *Estalactita* | *Сталактит*



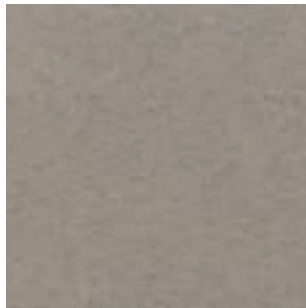
**TENO003** Camoscio | *Chamois* | *Chamois* | *Chamois* | *Gämse* | *Gamuza* | *Серна*



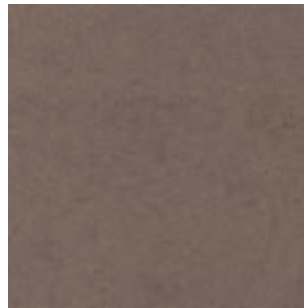
**TENO012** Rosso tovel | *Tovel red* | *Tovel rouge* | *Dunkel rot* | *Rojo tovel* | *Тёмно-Красный*



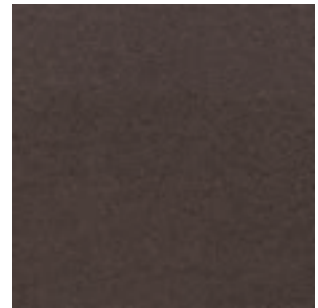
**TENO002** Daino | *Fallow deer* | *Daim* | *Damhirsch* | *Гамо* | *Лань*



**TENO005** Fiordo | *Fjord* | *Fjord* | *Fjord* | *Fjord* | *Fiordo* | *Фьорд*



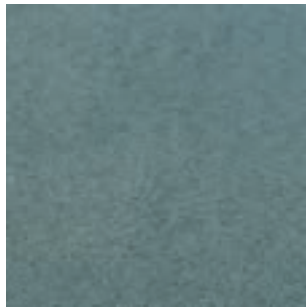
**TENO006** Renna | *Reindeer* | *Renne* | *Rentier* | *Reno* | *Олень*



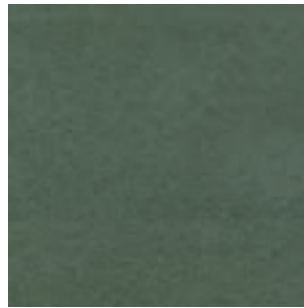
**TENO007** Fondente | *Dark chocolate* | *Brun chocolat* | *Bitterschokolade* | *Chocolate negro* | *Горький шоколад*



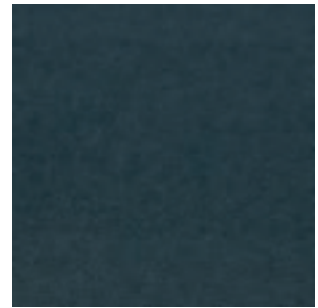
**TENO011** Ribes | *Currant* | *Groseille* | *Johannisbeere* | *Grosella* | *Смородина*



**TENO008** Verdigris | *Verdigris* | *Verdigris* | *Verdigris* | *Grau grün* | *Verdigris* | *Серо-зелёный*



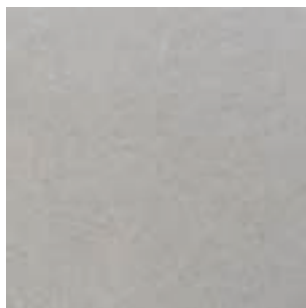
**TENO010** Muschio | *Moss* | *Mousse* | *Moos* | *Musgo* | *Мускус*



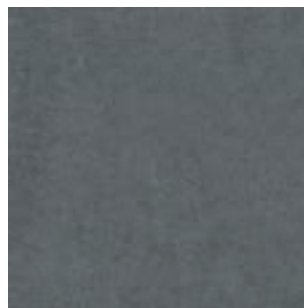
**TENO014** Nembo | *Nimbus* | *Nimbus* | *Nimbus* | *Wolke* | *Nimbo* | *Облако*



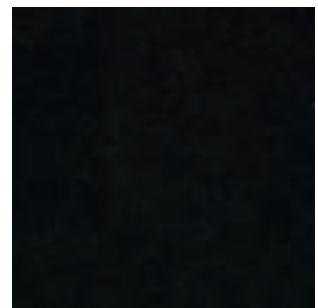
**TENO009** Blu polare | *Polar blue* | *Bleu polaire* | *Polar blau* | *Azul polar* | *Полярный синий*



**TENO004** Grigio artico | *Artic grey* | *Gris arctique* | *Arktisch grau* | *Gris ártico* | *Арктический серый*



**TENO013** Granito | *Granite* | *Granit* | *Granit* | *Granito* | *Гранит*



**TENO015** Carbone | *Coal* | *Charbon* | *Kohle* | *Carbón* | *Уголь*

# TESSUTO NORDIC

NORDIC FABRIC | TISSU NORDIC | STOFF NORDIC | TEJIDO NORDIC | NORDIC TKAHB

## COMPOSIZIONE | COMPOSITION

100% Poliestere | 100% Polyester

## SIMBOLOGIA | LIST OF SYMBOLS



## ALTEZZA | WIDTH

140 cm | 55.1 inch

## PESO | WEIGHT

550 g/mq ± 5%

## SOLIDITÀ DEL COLORE ALLO SFREGAMENTO | COLOUR FASTNESS TO RUBBING

UNI EN ISO 105 X12

a secco/dry 4/5 - a umido/wet 4/5

## SOLIDITÀ DEL COLORE ALLA LUCE | COLOUR FASTNESS TO LIGHT

UNI EN ISO 105-B02

4/5

## SOLIDITÀ DEL COLORE AL LAVAGGIO | COLOUR FASTNESS TO CLEANING

UNI EN ISO 105-C06:2010

4/5

## RESISTENZA AL PILLING | PILLING RESISTANCE

UNI EN ISO 12945-2 • 5

## RESISTENZA ALL'ABRAZIONE | ABRASION RESISTANCE

UNI EN ISO 12947-2:1998 Martindale 50.000 cicli/rubs



## IDROPELENTE | WATER REPELLENT



## ANTIMACCHIA | STAIN RESISTANT



## RESISTENZA AL FUOCO | FIRE RESISTANCE

TB117:2013

## RESISTENZA AL FUOCO CON TRATTAMENTO FR - CAT. C | FIRE RESISTANCE WITH FR TREATMENT CAT. C

BS 5852: Part1:1979 schedule 4 cigarette test

BS 5852: Part1:1979 schedule 5 match test

UNI 9175:2010 (CLASSE 11M)

Il trattamento FR è applicabile alle varianti colore Stalattite, Grigio Artico, Fiordo, Renna, Fondente, Blu Polare, Muschio, Ribes, Rosso Tovel, Granito, Carbone.

*Stalactite, Arctic Grey, Fjord, Reindeer, Dark Chocolate, Polar Blue, Moss, Currant, Tovel Red, Granite, Coal are available for FR treatment.*



## METODO DI PULIZIA | CLEANING INSTRUCTIONS

**Vino, bibite zuccherate, alcolici, birra, caffè, tè, latte:** rimuovere con un panno umido. **Penna a sfera, chewingum, resina, cioccolato, caramella:** frizionare con un panno imbevuto d'alcool etilico al 90%. **Grasso, olio, cosmetici:** utilizzare la schiuma di un sapone neutro per rimuovere la macchia, successivamente rimuovere il sapone con un panno umido.

La superficie di questo articolo può subire un trasferimento di colore a causa di alcuni coloranti utilizzati per abbigliamento e accessori. Questo fenomeno viene amplificato con alti tassi di umidità o alte temperature. L'azienda non si assume alcuna responsabilità in caso di migrazione di colore.

*Wine, sweet drinks, alcoholic drinks, liqueurs, beer, coffee, tea, milk: remove these substances with a soft damp cloth. Roll pens, chewing gum, resin, chocolate, candies: rub gently with a cloth, dampened with 90% ethyl alcohol. Grease, oil, make up: use a neutral soap lather, then remove the soap with a soft damp cloth.*

*The surface of this article may undergo a color transfer due to some dyes used for clothing and accessories. This phenomenon is amplified with high humidity or high temperatures. The company assumes no responsibility in the event of color migration.*

# PURE VIRGIN WOOL

PURE VIRGIN WOOL | PURE VIRGIN WOOL | REINE SCHNURWOLLE | PURE VIRGIN WOOL | НАТУРАЛЬНАЯ ЧИСТАЯ ШЕРСТЬ



**TL010** Polvere | Powder | Poudre | Puder | Gris polvo | Пыль



**TL001** Naturale | Natural | Natural | Natürlich | Natural | Натуральный



**TL002** Sabbia | Sand | Sable | Sand | Arena | Песочный



**TL011** Melone | Melon yellow | Jaune melon | Melonengelb | Amarillo melón | Дыня



**TL003** Testa di moro | Dark brown | Marron foncé | Dunkelbraun | Marrón oscuro | Темно-коричневый



**TL004** Verde bosco | Forest green | Vert forêt | Laubgrün | Verde | Лесная зелень



**TL012** Acquamarina | Aquamarine | Aigue-marine | Aquamarin | Aquamarina | Аквамарин



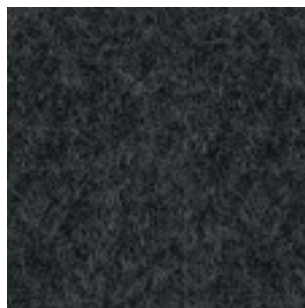
**TL006** Cielo | Light blue | Bleu clair | Hell blau | Celeste | Небо



**TL013** Blu navy | Navy blue | Bleu marine | Nachtblau | Azul navy | Темно-синий



**TL008** Grigio chiaro | Light grey | Gris clair | Hell grau | Gris claro | Светло-серый



**TL009** Antracite | Anthracite | Anthracite | Anthrazit | Antracita | Антрацит

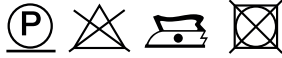
# PURE VIRGIN WOOL

PURE VIRGIN WOOL | PURE VIRGIN WOOL | REINE SCHNURWOLLE | PURE VIRGIN WOOL | НАТУРАЛЬНАЯ ЧИСТАЯ ШЕРСТЬ

## COMPOSIZIONE | COMPOSITION

100% lana vergine | virgin wool | laine vierge | reine Schnurwolle | lana virgen | Натуральная шерсть

## SIMBOLOGIA | LIST OF SYMBOLS



## RITIRO STIMATO | ESTIMATED SHRINKAGE

0%

## ALTEZZA | WIDTH

150 cm | 59 inch

## SPESSORE | THICKNESS

1,3 mm - 0,1 mm | 0.05 inch - 0.004 inch

## SOLIDITÀ DEL COLORE ALLA LUCE | COLOUR FASTNESS TO LIGHT

xeno ISO 105 B12

4/5

## SOLIDITÀ DEL COLORE ALLO SFREGAMENTO | COLOUR FASTNESS TO RUBBING

crockmeter ISO 105 X12

secco-dry 4/5

umido-wet 4

## RESISTENZA AL PILLING | PILLING RESISTANCE

ISO 12945-2

3/4

## RESISTENZA ALL'ABRASIONE | ABRASION RESISTANCE

UNI EN ISO 12947-2:2000

≥ 30000 giri | cycles



## TRATTAMENTO SPECIFICO ANTI-PILLING | SPECIAL ANTI-PILLING TREATMENT

Questo tessuto è stato trattato in finissaggio con il Sistema Termofisico "KD" ed è inalterabile.

Nè la bagnatura, nè il ferro da stiro potranno modificare le caratteristiche della stoffa.

*This fabric has been treated in finishing with the Termophysical System "KD" and it is inalterable.*

*Neither wetting nor ironing modify the characteristic of the cloth.*



## IGNIFUGO | FIRE RETARDANT

IT Classe 1IM

EU EN 1021 1/2

GB BS 5852 1

Naval Industry IMO Resolution



## METODO DI PULIZIA | CLEANING INSTRUCTIONS

Per la pulizia utilizzare un panno di cotone umido d'acqua.

*For cleaning, use a soft damp cloth and gentle detergent diluted with water.*



## RICICLABILE | RECYCLABLE



# VELLUTO SUPREME

SUPREME VELVET | VELOURS SUPREME | SAMT SUPREME | TERCIOPELO SUPREME | БАРХАТ SUPREME

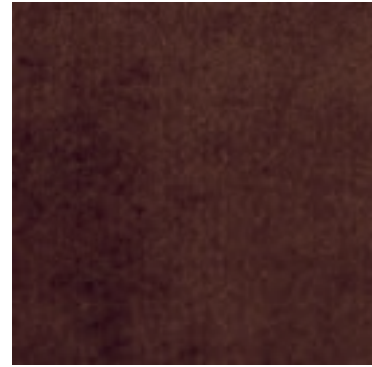
BONTEMPI  
CASA



**TEVS020** Latte | Milk | Lait | Milch | Leche | Молоко



**TEVS022** Celeste | Light blue | Bleu ciel | Himmelblau | Celeste | Лазурный



**TEVS005** Moka | Moka | Moka | Mokka | Мокка | Мокко



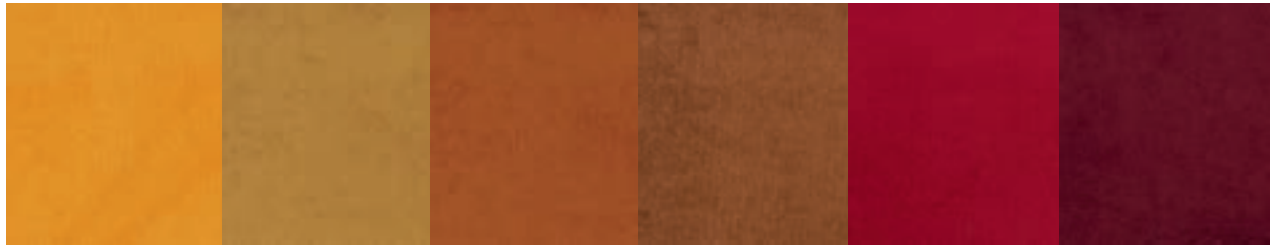
**TEVS001** Sabbia | Sand | Sable | Sand | Arena | Лесок

**TEVS004** Talpa | Mole | Taure | Grau | Торо | Серый

**TEVS007** Cappuccino | Cappuccino | Cappuccino | Cappuccino | Саручино | Капучино

**TEVS021** Cipria | Old rose | Vieux rose | Alte rose | Rojo viejo | Пудра

**TEVS023** Tabacco | Tabacco | Tabac | Tabak | Tabaco | Табак



**TEVS009** Curry | Curry | Curry | Currypulver | Curry | Kappu

**TEVS006** Giallo oro | Golden yellow | Jaune or Gold gelb | Amarillo oro | Золотой жёлтый

**TEVS003** Corten | Corten | Corten | Corten | Corten

**TEVS002** Cuoio | Hide leather colour | Cuir | Rot braun | Cuero | Красный-коричневый

**TEVS010** Scarlatto | Crimson | Cramois | Scharlachrot | Escarlata | Ярко-красный

**TEVS008** Amaranto | Amaranth | Amarante | Amarant | Amaranto | Амарант



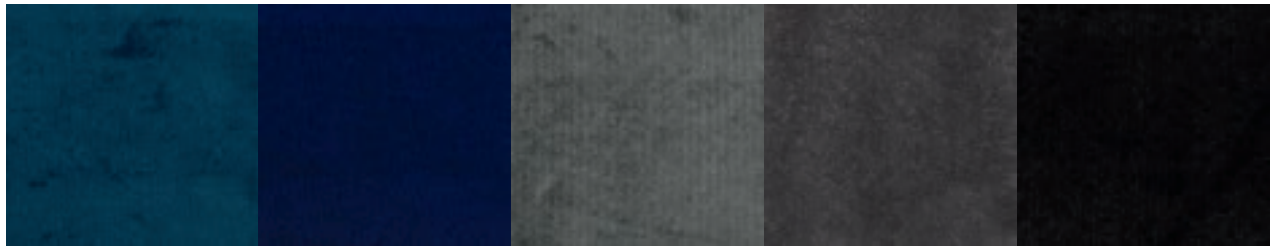
**TEVS018** Ginepro | Juniper | Genévrier | Wacholder | Enebro | Можжевельник

**TEVS013** Muschio | Moss | Mousse | Moos | Musgo | Мускус

**TEVS014** Petrolio | Petroleum | Pétrole | Ölfarbe | Petróleo | Нефть

**TEVS012** Verde smeraldo | Emerald green | Vert emeraude | Smaragdgrün | Verde esmeralda | Изумрудно-зеленый

**TEVS015** Pino | Pine | Pin | Kiefer | Pino | Сосна



**TEVS016** Blu marino | Navy blue | Bleu marin | Marineblau | Azul marino | Черное море

**TEVS017** Blu oceano | Ocean blue | Bleu ocean | Ozeanblau | Azul oceano | Синий океан

**TEVS011** Roccia | Stone | Gris rock | Stein | Roca | Камень

**TEVS024** Piombo | Lead | Plomb | Blei | Plomo | Свинец

**TEVS019** Nero | Black | Noir | Schwarz | Negro | Чёрный

VELLUTO SUPREME  
7

# VELLUTO SUPREME

SUPREME VELVET | VELOURS SUPREME | SAMT SUPREME | TERCIOPELO SUPREME | БАПХАТ SUPREME

## COMPOSIZIONE | COMPOSITION

Pelo: 100% Cotone - Base: 89% Cotone - 11% Poliestere  
Pile: 100% Cotton - Base: 89% Cotton - 11% Polyester

## SIMBOLOGIA | LIST OF SYMBOLS



## ALTEZZA | WIDTH

138/140 cm | 54.3/55.1 inch

## PESO | WEIGHT

610 g/ml

## RESISTENZA ALLO SCORRIMENTO DEI FILI (180N) | RESISTANCE TO SEAM SLIPPAGE (180N)

UNI EN ISO 13936-2

ordito/warp <5mm - trama/weft <5mm

## RESISTENZA ALL'ABRASIONE | ABRASION RESISTANCE

UNI EN ISO 12947-2

Martindale >50.000 cicli/rubs

## RESISTENZA AL PILLING | PILLING RESISTANCE

UNI EN ISO 12945-2 - 4/5

## RESTRINGIMENTO IN ACQUA 30° | SHRINKAGE TO WATER 30°

UNI EN ISO 6330

ordito/warp -1%

trama/weft -1%

## RESTRINGIMENTO A SECCO | DRY SHRINKAGE

ISO 3175-2

ordito/warp -1%

trama/weft -1%



## METODO DI PULIZIA | CLEANING INSTRUCTIONS

Per la pulizia vaporizzare la macchia con acqua da una distanza di 15-20 cm e passare con un panno morbido. Non sfregare. Per togliere la polvere utilizzare una spazzola per velluti e setole morbide.

La superficie del tessuto può subire un trasferimento di colore a causa di alcuni coloranti utilizzati per abbigliamento e accessori. Questo fenomeno viene amplificato con alti tassi di umidità o alte temperature. L'azienda non si assume alcuna responsabilità in caso di migrazione di colore.

*The surface of this article may undergo a color transfer due to some dyes used for clothing and accessories. This phenomenon is amplified with high humidity or high temperatures. The company assumes no responsibility in the event of color migration.*

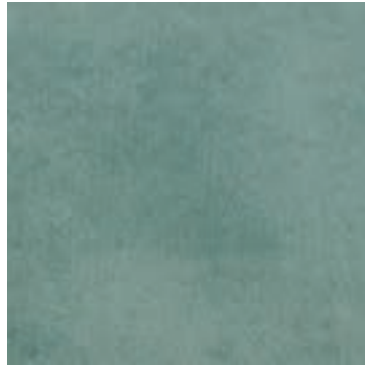
*To clean, spray the stain with water from a distance of 15-20 cm | 6-8 inches and wipe with a soft cloth. Do not rub. To remove dust on velvet, use a soft bristle brush.*

# TESSUTO BOUQUET

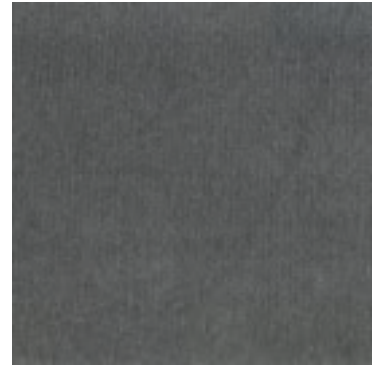
BOUQUET FABRIC | TISSU BOUQUET | STOFF BOUQUET | TEJIDO BOUQUET | BOUQUET ТКАНЬ



**TEBQ002** Ecrù | Ecrù | Ecrù | Ecrù | Crudo | Экрю



**TEBQ015** Eucalipto | Eucalyptus | Eucalyptus | Eukalyptus | Eucalipto | Эвкалипт



**TEBQ019** Grigio scuro | Dark grey | Gris foncé | Dunkel grau | Gris oscuro | Тёмно-серый



**TEBQ001** Vaniglia | Vanilla | Vanille | Vanille | Vainilla | Ваниль



**TEBQ004** Argan | Argan | Argan | Argan | Argan | Арган



**TEBQ003** Noce moscata | Nutmeg | Noix de muscade | Muskatblüte | Nuez moscada | Мускатный орех



**TEBQ005** Castagno | Chestnut | Châtaigne | Kastanie | Castaño | Каштан



**TEBQ006** Vetiver | Vetiver | Vetiver | Vetiver | Ветивер



**TEBQ010** Craspedia | Craspedia | Craspedia | Craspedia | Blumen Gelb | Craspedia | Жёлтая краспедия



**TEBQ009** Papaya | Papaya | Papaya | Papaya | Papaya | Папайя



**TEBQ012** Papavero | Poppy red | Coquelicot | Mohn rot | Amarola | Опиный мак



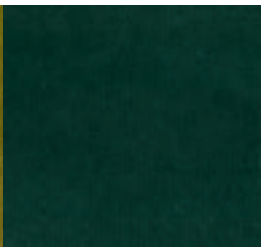
**TEBQ011** Viola | Purple | Violet | Violet | Violeta | Фиолетовый



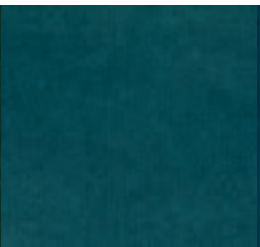
**TEBQ013** Azalea | Azalea | Azalee | Azalee | Azalea | Азалия



**TEBQ008** Pistacchio | Pistachio | Pistache | Pistazien | Pistacho | Фисташка



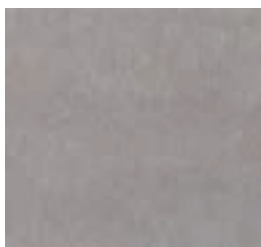
**TEBQ007** Pino | Pine | Pin | Kiefer | Pino | Сосна



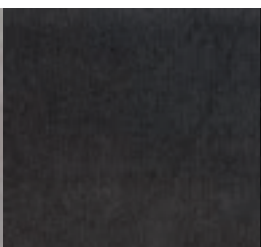
**TEBQ014** Foglia di tè | Teal | Feuille de thé | Tee blatt | Hoja de tè | Лист чай



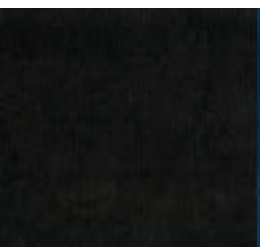
**TEBQ016** Blu di prussia | Prussian blue | Bleu de prussie | Preußisch blau | Azul de prussia | Прусский синий



**TEBQ018** Grigio chiaro | Light grey | Gris claire | Hell grau | Gris claro | Светло-серый



**TEBQ020** Antracite | Anthracite | Anthracite | Anthrazit | Antracita | Антрацит



**TEBQ021** Gelso nero | Black mulberry | Murier noir | Schwarze maulbeere | Morera negra | Шелковица чёрная



**TEBQ017** Blu pavone | Blue peacock | Bleu paone | Pfau blau | Azul pavo | Синий павлин

**N.B.:** I campioni colore sono da considerarsi indicativi per ciascun prodotto in quanto il colore può subire variazioni in funzione degli spessori e della composizione dei materiali utilizzati. | Use card as example, colours may change according to materials used.

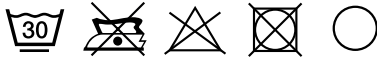
# TESSUTO BOUQUET

BOUQUET FABRIC | TISSU BOUQUET | STOFF BOUQUET | TEJIDO BOUQUET | BOUQUET TKAHB

## COMPOSIZIONE | COMPOSITION

100% Poliestere | 100% Polyester

## SIMBOLOGIA | LIST OF SYMBOLS



## ALTEZZA | WIDTH

140 cm | 55.1 inch

## PESO | WEIGHT

300 g/mq ± 5%

## RESISTENZA ALL'ABRASIONE | ABRASION RESISTANCE

UNI EN ISO 12947-2:1998 Martindale 100.000 cicli/rubs

## SOLIDITÀ DEL COLORE ALLO SFREGAMENTO | COLOUR FASTNESS TO RUBBING

UNI EN ISO 105 X12

a secco/dry 4/5 - a umido/wet 4/5

## SOLIDITÀ DEL COLORE ALLA LUCE | COLOUR FASTNESS TO LIGHT

UNI EN ISO 105-B02

5

## SOLIDITÀ DEL COLORE AL LAVAGGIO | COLOUR FASTNESS TO CLEANING

UNI EN ISO 105-C06:2010

4/5



## RESISTENZA AL FUOCO | FIRE RESISTANCE

TB117:2013

## RESISTENZA AL FUOCO CON TRATTAMENTO FR - CAT. C | FIRE RESISTANCE WITH FR TREATMENT CAT. C

BS 5852: Part1:1979 schedule 4 cigarette test

BS 5852: Part1:1979 schedule 5 match test

UNI 9175:2010 (CLASSE 1IM)

Il trattamento FR è applicabile alle varianti colore Vaniglia, Ecrù, Noce Moscata, Argan, Vetiver, Pino, Pistacchio, Azalea, Foglia Di Tè, Blu Di Prussia, Blu Pavone, Grigio Scuro e Gelso Nero può essere ignifugabile.

*Vanilla, Ecrù, Nutmeg, Argan, Vetiver, Pine, Pistachio, Azalea, Teal, Prussian Blue, Blue Peacock, Dark Grey and Black Mulberry are available for FR treatment.*



## METODO DI PULIZIA | CLEANING INSTRUCTIONS

Per la pulizia utilizzare un panno di cotone umido e detergente neutro diluito con acqua.

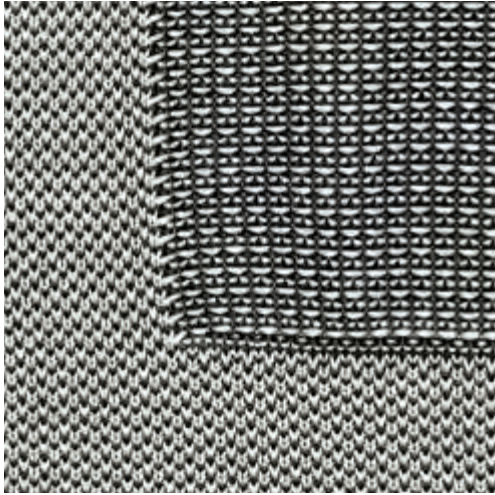
La superficie del tessuto può subire un trasferimento di colore a causa di alcuni coloranti utilizzati per abbigliamento e accessori. Questo fenomeno viene amplificato con alti tassi di umidità o alte temperature. L'azienda non si assume alcuna responsabilità in caso di migrazione di colore.

*For cleaning, use a soft damp cloth and gentle detergent diluted with water. The surface of this article may undergo a color transfer due to some dyes used for clothing and accessories. This phenomenon is amplified with high humidity or high temperatures. The company assumes no responsibility in the event of color migration.*

## TESSUTO ELASTICO A RETE

ELASTIC FABRIC | TISSU EN FILET ÉLASTIQUE | ELASTISCHER NETZSTOFF | TEJIDO DE RED ELÁSTICA | СЕТЧАТАЯ ЭЛАСТИЧНАЯ ТКАНЬ

**BONTEMPI**  
CASA



**TEL02L/TEL02** Bianco nero | *White black* | *Blanc noir* | *Weiß schwarz* | *Blanco negro* | *Белый-черный*



**TEL06L/TEL06** Beige | *Beige* | *Beige* | *Beige* | *Beige* | *Без*



**TEL07L/TEL07** Amarantho | *Reddish purple* | *Amarante* | *Amarant* | *Amaranto* | *Амарант*



**TEL08L/TEL08** Jeans | *Jeans* | *Jean* | *Jeans* | *Denim* | *Джинс*



**TEL05L/TEL05** Nero | *Black* | *Noir* | *Schwarz* | *Negro* | *Черный*

TESSUTO ELASTICO A RETE  
∞ A

## TESSUTO ELASTICO A RETE

ELASTIC FABRIC | TISSU EN FILET ÉLASTIQUE | ELASTISCHER NETZSTOFF | TEJIDO DE RED ELÁSTICA | СЕТЧАТАЯ ЭЛАСТИЧНАЯ ТКАНЬ

### COMPOSIZIONE | COMPOSITION

100% Trevira® CS

### RESISTENZA ALLA LACERAZIONE | BREAKING LOAD

DIN EN 2082 CN 2100

### RESISTENZA ALLA FLESSIONE | ELONGATION AT BREAK

DIN ISO 2062 %39



### METODO DI PULIZIA | CLEANING INSTRUCTIONS

Per la pulizia, utilizzare un panno di cotone inumidito con acqua.  
For cleaning, use a cloth dampened with water.



### IGNIFUGO | FIRE RETARDANT

STANDARD 100 by OEKO-TEX®

## TEXPLAST

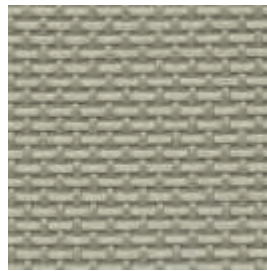
TEXPLAST | TEXPLAST | TEXPLAST | TEXPLAST | ТЕКСПЛАСТ



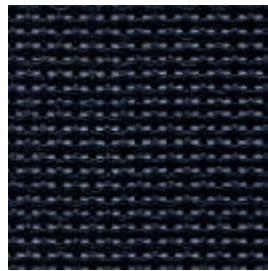
**X036** Grigio | Grey | Gris | Grau | Gris | Серый



**X039** Bianco | White | Blanc | Weiß | Blanco | белый



**X040** Sabbia | Sand | Sable | Sand | Arena | Песочный



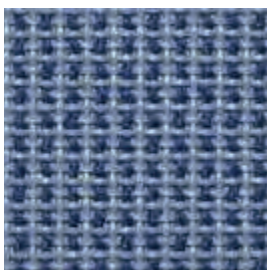
**X035** Nero | Black | Noir | Schwarz | Negro | Черный

## SOFT TEXPLAST

SOFT TEXPLAST | SOFT TEXPLAST | SOFT TEXPLAST | SOFT TEXPLAST | МЯГКИЙ ТЕКСПЛАСТ



**X112** Moon Rock | Moon Rock | Moon Rock | Moon Rock | Moon Rock | Лунный камень



**X113** Ceruleo | Cerulean blue | Bleu céruleen | Hell blau | Cerúleo | Лазурный



**X114** Antracite | Anthracite | Anthracite | Anthrazit | Antracita | Антрацит

**N.B.:** I campioni colore sono da considerarsi indicativi per ciascun prodotto in quanto il colore può subire variazioni in funzione degli spessori e della composizione dei materiali utilizzati | Use card as example, colours may change according to materials used.

## TEXPLAST

TEXPLAST | TEXPLAST | TEXPLAST | TEXPLAST | ТЕКСПЛАСТ

### COMPOSIZIONE | COMPOSITION

75% PVC | PVC | PVC | PVC | PVC | ПВХ  
25% poliestere | polyester | polyester | Polyester | poliéster | полиэстер

### SPESSORE | THICKNESS

1,15 mm | 0.045 inch

### CARICO DI ROTTURA | BREAKING LOAD

UNI EN ISO 1421  
ordito/warp 275 Kg - 5 cm | 607 lbs - 1.97 inch  
trama/weft 240 Kg - 5 cm | 530 lbs - 1.97 inch

### SOLIDITÀ DEL COLORE ALLO SFREGAMENTO | COLOUR FASTNESS TO RUBBING

EN ISO 105-x12:2003 - COL. 4165, 1101, 2102, 4154, 4014, 1195  
5 - val. max

### RESISTENZA A FATICA | STRESS RESISTANCE

EN 1728:2000 - EN 15373:2007 - livello 3° severo / 3°hard level  
>200.000 cicli/cycles / 1.000 N

### RESISTENZA ALLA LUCE | LIGHT FASTNESS

EN 1728:2000 - EN 15373:2007 - livello 3° severo / 3°hard level  
>200.000 cycles / 1.000 N

### RESISTENZA ALL'ABRASIONE | ABRASION RESISTANCE

Martindale EN ISO 12947-2:1998  
>100.000 cycles



### METODO DI PULIZIA | CLEANING INSTRUCTIONS

Per la pulizia utilizzare un panno di cotone umido d'acqua.  
For cleaning, use a soft damp cloth and gentle detergent diluted with water.

## SOFT TEXPLAST

SOFT TEXPLAST | SOFT TEXPLAST | SOFT TEXPLAST | SOFT TEXPLAST | МЯГКИЙ ТЕКСПЛАСТ

### COMPOSIZIONE | COMPOSITION

60% polivinile | polyvinyl | polyvinyle | Polyvinyl | polivinil | поливинил  
40% poliestere | polyester | polyester | Polyester | poliéster | полиэстер

### SPESSORE | THICKNESS

1,3 mm | 0.51 inch

### CARICO DI ROTTURA | BREAKING LOAD

Ordito | Warp 220 Kg - 5 cm | 486 lbs - 1.97 inch  
Trama | Weft 180 Kg - 5 cm | 398 lbs - 1.97 inch



### METODO DI PULIZIA | CLEANING INSTRUCTIONS

Per la pulizia utilizzare un panno di cotone umido d'acqua.  
For cleaning, use a soft damp cloth and gentle detergent diluted with water.



## TESSUTO TECNICO

TECHNICAL FABRIC | TISSU TECHNIQUE | ENGINEERING STOFF | TEJIDO TÉCNICO | ТЕХНИЧЕСКАЯ ТКАНЬ

**BONTEMPI**  
CASA



**TT004** Antracite | Anthracite | Anthracite | Anthrazit | Antracita | Антрацит



**TT001** Sabbia | Sand | Sable | Sand | Arena | Песочный



**TT002** Fango | Mud | Vase | Schlammfarbig | Barro | Серо-коричневый

9 TESSUTO TECNICO

## TESSUTO TECNICO

TECHNICAL FABRIC | TESSU TECHNIQUE | ENGINEERING STOFF | TEJIDO TÉCNICO | ТЕХНИЧЕСКАЯ ТКАНЬ

### COMPOSIZIONE | COMPOSITION

60% PVC | PVC | PVC | PVC | PVC | ПВХ

40% poliestere | polyester | polyester | Polyester | poliéster | полиэстер



### METODO DI PULIZIA | CLEANING INSTRUCTIONS

Per la pulizia utilizzare un panno di cotone umido d'acqua.

For cleaning, use a soft damp cloth and gentle detergent diluted with water.

# PELLE PREMIUM

PREMIUM NAPPA LEATHER | PEAU PREMIUM | LEDER PREMIUM | PIEL PREMIUM | КОЖА ПРЕМИУМ

BONTEMPI  
CASA



**PR06** Verde chiaro | *Light green* | *Vert clair* | *Hell grün* | *Verde claro* | *Светло-Зеленый*



**PR25** Mattone | *Red Brick* | *Brique* | *Backstein* | *Ladrillo* | *Кирпичный*



**PR26** Cotto | *Burnt Clay* | *Orangé rouge* | *Terrakotta* | *Naranja quemado* | *Терракота*



**PR01** Bianco | *White* | *Blanc* | *Weiß* | *Blanco* | *Белый*

**PR02** Avorio | *Ivory* | *Ivoire* | *Elfenbein* | *Marfil* | *Слоновая Кость*

**PR03** Beige | *Beige* | *Beige* | *Beige* | *Beige* | *Бежевый*

**PR04** Sabbia | *Sand* | *Sable* | *Sand* | *Arena* | *Песочный*

**PR05** Grigio chiaro | *Light grey* | *Gris clair* | *Hell grau* | *Gris claro* | *Светло-Серый*

**PR07** Cipria | *Old rose* | *Vieux rose* | *Alte rose* | *Rojo viejo* | *Пудра*



**PR08** Ghiaccio | *Ice* | *Glace* | *Eis* | *Hielo* | *Лед*

**PR09** Talpa | *Grey* | *Gris* | *Grau* | *Gris* | *Серовато-Коричневый*

**PR10** Antracite | *Anthracite* | *Anthracite* | *Anthrazit* | *Antracita* | *Антрацит*

**PR11** Nero | *Black* | *Noir* | *Schwarz* | *Negro* | *Черный*

**PR12** Avio | *Air Force blue* | *Air Force bleu* | *Air Force blau* | *Azul RAF* | *Голубой авиационный*

**PR13** Blu | *Blue* | *Bleu* | *Blau* | *Azul* | *Синий*



**PR14** Fango | *Mud* | *Vase* | *Schlamm* | *Barro* | *Серо-Бежевый*

**PR15** Nocciola | *Hazelnut* | *Noisette* | *Haselnuß* | *Avellana* | *Орех*

**PR16** Cioccolato | *Chocolate* | *Chocolat* | *Schokolade* | *Chocolate* | *Шоколад*

**PR17** Testa di moro | *Dark brown* | *Marrón foncé* | *Dunkelbraun* | *Marrón oscuro* | *Темно-коричневый*

**PR18** Verde oliva | *Olive green* | *Vert olive* | *Olivgrün* | *Verde oliva* | *Зеленый оливковый*

**PR19** Verdone | *Dark green* | *Vert foncé* | *Dunkelgrün* | *Verde oscuro* | *Темно-зеленый*



**PR20** Giallo | *Yellow* | *Jaune* | *Gelb* | *Amarillo* | *Желтый*

**PR21** Rosso | *Red* | *Rouge* | *Rot* | *Rojo* | *Красный*

**PR22** Rosso antico | *Oxide Red* | *Rouge oxyde* | *Oxide Rot* | *Rojo óxido* | *Красный античный*

**PR24** Amarantho | *Amaranth* | *Amarante foncé* | *Amarant* | *Amaranto* | *Амарант*

**PR23** Rosa antico | *Dark pink* | *Rose foncé* | *Dunkelrose* | *Rosa antiguo* | *Состаренная роза*

PELLE PREMIUM

10A

# PELLE PREMIUM

PREMIUM NAPPA LEATHER | PEAU PREMIUM | LEDER PREMIUM | PIEL PREMIUM | КОЖА ПРЕМИУМ

Pelle bovina mezzo fiore a grana naturale di spessore finito 0,9 - 1,1 mm.  
Tintura passante; rifinitura con resine e pigmenti. Pelle con mano morbida, tatto ceroso e aspetto semiopaco.

*Bovine of European origin, lightly buffed natural grain, finished thickness 0.9 - 1,1 mm (0.03 - 0.04 inch)  
Through dyed; finishing with resins and pigments. Leather with a pigmented and protective coat, with a soft, waxy feel and semi-matt appearance.*

## SOLIDITÀ DEL COLORE ALLO STROFINIO A SECCO @500 CICLI

COLOUR FASTNESS TO RUBBING, DRY @500 CYCLES

UNI EN ISO 11640

≥4

scala dei grigi ISO 105-A02:1993 - grey scale ISO 105-A02:1993

## SOLIDITÀ DEL COLORE ALLO STROFINIO A UMIDO @250 CICLI

COLOUR FASTNESS TO WET RUBBING @250 CYCLES

UNI EN ISO 11640

≥4

scala dei grigi ISO 105-A02:1993 - grey scale ISO 105-A02:1993

## SOLIDITÀ DEL COLORE ALLO STROFINIO A SUDORE @80 CICLI

COLOUR FASTNESS TO RUBBING, PERSPIRATION @80 CYCLES

UNI EN ISO 11460-11641 (pH8)

≥4

scala dei grigi ISO 105-A02:1993 - grey scale ISO 105-A02:1993

## RESISTENZA ALLE FLESSIONI A SECCO @50.000 CICLI

FLEX RESISTANCE, DRY @50.000 CYCLES

UNI EN ISO 5402

Nessun danno - No damage

## ADESIONE A SECCO | ADHESION OF FINISH, DRY

UNI EN ISO 11644

≥2

## SOLIDITÀ DEL COLORE ALLA LUCE ARTIFICIALE. ENERGIA DI ESPOSIZIONE 16.000 kj/m.

COLOUR FASTNESS TO ARTIFICIAL LIGHT. EXPOSITION ENERGY 16.000 kj/m.

UNI EN ISO 105B02 (MET.5)

≥5

scala dei blu ISO 105-B02:1994§4.1.1 - blue scale ISO 105-B02:1994§4.1.1



## RESISTENZA ALLA SIGARETTA E ALLA PICCOLA FIAMMA

(questa norma si riferisce esclusivamente alla combinazione pelle/imbottitura)

FIRE SAFETY - BURNING BEHAVIOUR CIGARETTE AND MATCH FLAME

(this norm refers exclusively to the combination leather and padding)

BS 5852:1979 Superato - Pass

BS EN 1021 - 1 - 2:2006 Superato - Pass



## METODO DI PULIZIA E MANUTENZIONE | CLEANING AND MAINTENANCE INSTRUCTIONS

Spolverare regolarmente la pelle con un panno morbido ed asciutto.

Eventuali macchie si possono eliminare usando un panno inumidito con acqua e sapone neutro.

Asciugare immediatamente dopo il trattamento.

Non strofinare, ma tamponare delicatamente dai bordi al centro della macchia.

Evitare la luce diretta del sole.

Evitare l'esposizione a fonti di calore.

*Dust regularly with a soft and dry cloth.*

*Spots can be washed off using a lightly damp cloth with mild soap.*

*Dry immediately after the treatment.*

*Do not rub. Use a circular motion working toward the centre of the stain.*

*Avoid placing leather near direct sun.*

*Keep the leather away from heat sources.*



RICICLABILE | RECYCLABLE

# CUOIO

HIDE LEATHER | CUIR | KERNLEDER | CUERO | ЖЕСТКАЯ КОЖА

BONTEMPI  
CASA



**Q429** Bianco | White | Blanc | Weiß | Blanco | белый



**Q239/Q406** Avorio | Ivory | Ivoire | Elfenbeinfarbe | Marfil | Слоновая кость



**Q408/Q408P** Sabbia | Sand | Sable | Sand | Arena | Песочный



**Q257/Q437** Fango | Mud | Vase | Schlammfarbig | Barro | Серо-коричневый



**Q259/Q439** Cioccolato | Chocolate | Chocolat | Schokolade | Chocolate | Шоколад



**Q235/Q403/Q403P** Testa di moro | Dark brown | Marron foncé | Dunkelbraun | Marrón oscuro | Темно-коричневый



**Q232/Q401** Bordeaux | Bordeaux | Bordeaux | Bordeaux rot | Burdeos | Бордо



**Q258/Q438** Granata | Brown red | Rouge brun | Braunrot | Rojo pardo | Красный гранат



**Q238/Q405** Rosso | Red | Rouge | Rot | Rojo | Красный



**Q032/Q504/Q504P** Bulgaro | Russian | Russian | Russisch rot | Búlgaro | Красная юфта

11 CUOIO

# CUOIO

HIDE LEATHER | CUIR | KERNLEDER | CUERO | ЖЕСТКАЯ КОЖА

## COMPOSIZIONE | COMPOSITION

100% pelli di origine bovina conciate al cromo | *leather of bovine origins chrome tanned* |  
*peaux d'origine bovine tannées au chrome* | *Rindsleder Chrom gegerbt* | *pieles de origen bovino*  
*curtidas al cromo* | *кожа коровы, обработанная путем хромового дубления*

## SPESSORE | THICKNESS

1,8 mm - 2 mm | *0.007 inch - 0.008 inch*

## CARATTERISTICHE | CHARACTERISTIC

Grana liscia - *Smooth grain*



## METODO DI PULIZIA E MANUTENZIONE | CLEANING AND MAINTENANCE INSTRUCTIONS

Spolverare regolarmente la pelle con un panno morbido ed asciutto.

Eventuali macchie si possono eliminare usando un panno inumidito con acqua e sapone neutro.

Asciugare immediatamente dopo il trattamento.

Non strofinare, ma tamponare delicatamente dai bordi al centro della macchia.

Evitare la luce diretta del sole.

Evitare l'esposizione a fonti di calore.

*Dust regularly with a soft and dry cloth.*

*Spots can be washed off using a lightly damp cloth with mild soap.*

*Dry immediately after the treatment.*

*Do not rub. Use a circular motion working toward the centre of the stain.*

*Avoid placing leather near direct sun.*

*Keep the leather away from heat sources.*



RICICLABILE | RECYCLABLE

# CUOIO

HIDE LEATHER | CUIR | KERNLEDER | CUERO | ЖЕСТКАЯ КОЖА

BONTEMPI  
CASA



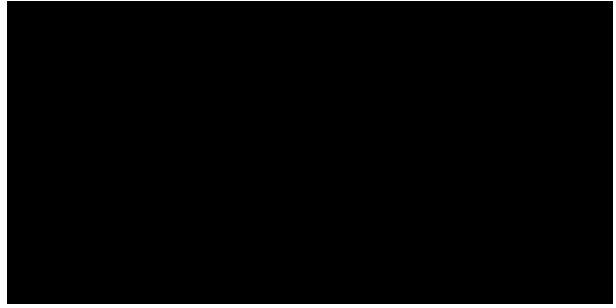
**Q256/Q436** Azzurro polvere | Blue grey | Gris bleu | Blau grau | Azul gris | Серо-голубой



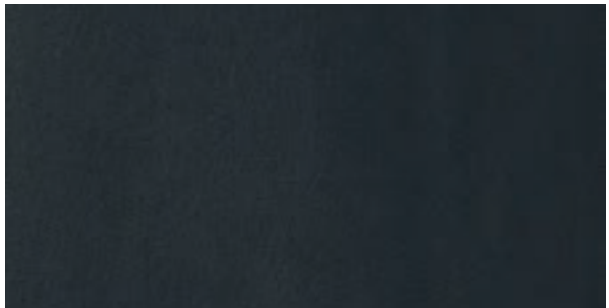
**Q255/Q435** Grigio chiaro | Light grey | Gris clair | Hell grau | Gris claro | Светло-Серый



**Q410** Antracite | Anthracite | Anthracite | Anthrazit | Antracita | Антрацит



**Q230/Q400/Q400P** Nero | Black | Noir | Schwarz | Negro | Черный



**Q260/Q440** Blu Indaco | Blue | Bleu | Blau | Azul | Синий Индиго



CUOIO  
11BIS

# CUOIO

HIDE LEATHER | CUIR | KERNLEDER | CUERO | ЖЕСТКАЯ КОЖА

## COMPOSIZIONE | COMPOSITION

100% pelli di origine bovina conciate al cromo | *leather of bovine origins chrome tanned* |  
*peaux d'origine bovine tannées au chrome* | *Rindsleder Chrom gegerbt* | *pieles de origen bovino*  
*curtidas al cromo* | *кожа коровы, обработанная путем хромового дубления*

## SPESSORE | THICKNESS

1,8 mm - 2 mm | *0.007 inch - 0.008 inch*

## CARATTERISTICHE | CHARACTERISTIC

Grana liscia - *Smooth grain*



## METODO DI PULIZIA E MANUTENZIONE | CLEANING AND MAINTENANCE INSTRUCTIONS

Spolverare regolarmente la pelle con un panno morbido ed asciutto.

Eventuali macchie si possono eliminare usando un panno inumidito con acqua e sapone neutro.

Asciugare immediatamente dopo il trattamento.

Non strofinare, ma tamponare delicatamente dai bordi al centro della macchia.

Evitare la luce diretta del sole.

Evitare l'esposizione a fonti di calore.

*Dust regularly with a soft and dry cloth.*

*Spots can be washed off using a lightly damp cloth with mild soap.*

*Dry immediately after the treatment.*

*Do not rub. Use a circular motion working toward the centre of the stain.*

*Avoid placing leather near direct sun.*

*Keep the leather away from heat sources.*



RICICLABILE | RECYCLABLE



## FIBRA DI CUIOIO

LEATHER FIBRE | FIBRE DE CUIR | LEDERFASER | FIBRA DE CUERO | КОЖЕВЕННОЕ ВОЛОКНО



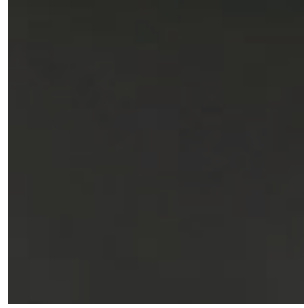
**J056** Sabbia | Sand | Sable | Sand | Arena | Песочный



**J051** Bianco | White | Blanc | Weiß | Blanco | Белый



**J054/J050** Testa di moro | Dark brown | Marron foncé | Dunkelbraun | Marrón oscuro | Темно-коричневый



**J059** Antracite | Anthracite | Anthracite | Anthrazit | Antracita | Антрацит



**J055** Nero | Black | Noir | Schwarz | Negro | Черный

# FIBRA DI CUIOIO

LEATHER FIBRE | FIBRE DE CUIR | LEDERFASER | FIBRA DE CUERO | КОЖЕВЕННОЕ ВОЛОКНО

## COMPOSIZIONE | COMPOSITION

98% naturale | *natural* | *natural* | *natural* | *natural* | *натуральная*

2% agglomerato di ritagli di concia | *agglomerated tanned cutting* | *ensemble de morceaux de tannage* | *Gerben Abschnitt-gepresst* | *Aglomerado de virutas de curtido* | *агломерат обрезков дубления*

## SPESSORE | THICKNESS

1,4 mm - 2 mm | *0.005 inch - 0.008 inch*

## CARATTERISTICHE | CHARACTERISTIC

Stampa liscia effetto cuoietto. Il prodotto subisce nel tempo un naturale e graduale invecchiamento.  
*Smooth printing with leather effect. The product is subject to natural and gradual ageing over the time.*



## METODO DI PULIZIA E MANUTENZIONE | CLEANING AND MAINTENANCE INSTRUCTIONS

Per la pulizia utilizzare un panno di cotone umido d'acqua.

Teme l'umidità. Evitare la luce diretta del sole.

*For cleaning, use a soft damp cloth and gentle detergent diluted with water.*

*Avoid humidity. Avoid direct sunlight.*

# POLIPROPILENE

POLYPROPYLENE | POLYPROPYLÈNE | POLYPROPYLEN | POLIPROPILENO | ПОЛИПРОПИЛЕН

**BONTEMPI**  
CASA



**Z031** Bianco | White | Blanc | Weiß | Blanco | Белый



**Z006** Grigio chiaro | Light grey | Gris clair | Hell grau | Gris claro | Светло-серый



**Z029** Sabbia | Sand | Sable | Sand | Arena | Песочный



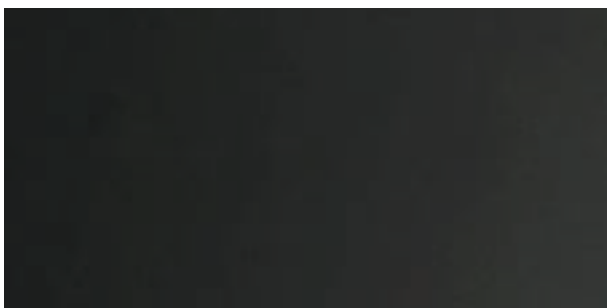
**Z009** Giallo senape | Mustard yellow | Moutarde | Senf | Amarillo mostaza | Желтая горчица



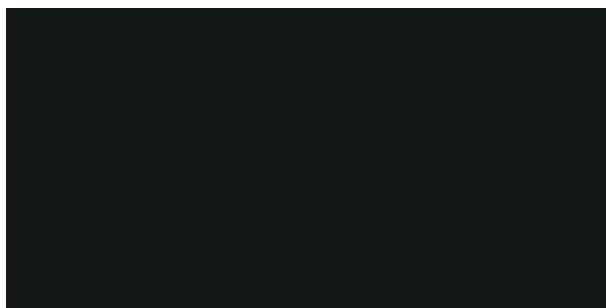
**Z008** Caramello | Caramel | Caramel | Karamell | Caramelo | Карамель



**Z007** Azzurro polvere | Dusty blue | Gris bleu | Puderblau | Azul polvo | Синий порошок



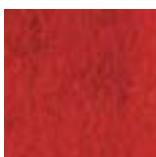
**Z039** Antracite | Anthracite | Anthracite | Anthrazit | Antracita | Антрацит



**Z038** Nero | Black | Noir | Schwarz | Negro | Черный  
**Z005** Nero laccato soft velvet | Soft touch black | Noir laqué soft touch | Schwarz soft velvet lackiert | Negro soft touch | Черный лакированный мягкий бархат

## LANA NATURALE PER PAD

NATURAL WOOL PAD FOR CHAIR | GALETTE POUR CHAISE  
EN LAINE NATURELLE | REINE SCHNURWOLLE  
FÜR PAD | LANA NATURAL PARA COJIN |  
НАТУРАЛЬНАЯ ШЕРСТЬ ДЛЯ ЛОДУШКИ



**TPAD01** Rosso | Red | Rouge | Rot | Rojo | Красный



**TPAD02** Antracite | Anthracite | Anthracite | Anthrazit | Antracita | Антрацит



**TPAD03** Grigio chiaro | Light grey | Gris clair | Hell grau | Gris claro | Светло-серый

**N.B.:** I campioni colore sono da considerarsi indicativi per ciascun prodotto in quanto il colore può subire variazioni in funzione degli spessori e della composizione dei materiali utilizzati | Use card as example, colours may change according to materials used.

# METALLO

METAL | MÉTAUX | METALLE | METAL | МЕТАЛЛЫ

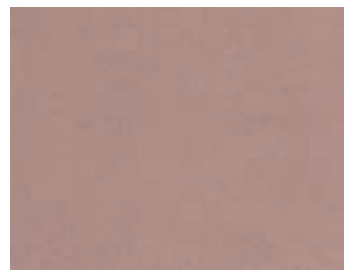
BONTEMPI  
CASA



**M306** Bianco | White | Blanc | Weiß | Blanco | Белый



**M312** Sabbia | Sand | Sable | Sand | Arena | Песочный



**M317** Cipria | Old rose | Vieux rose | Alte rose | Rojo viejo | Пудра



**M314** Giallo | Yellow | Jaune | Gelb | Amarillo | Желтый



**M319** Verde chiaro | Light green | Vert clair | Hell grün | Verde claro | Светло-зеленый



**M318** Celeste | Light blue | Bleu clair | Hell blau | Celeste | Лазурный



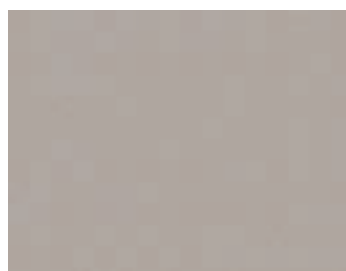
**M316** Blu | Blue | Bleu | Blau | Azul | Синий



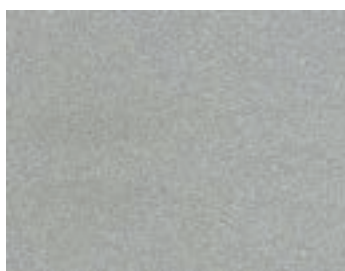
**M315** Rosso | Red | Rouge | Rot | Rojo | Красный



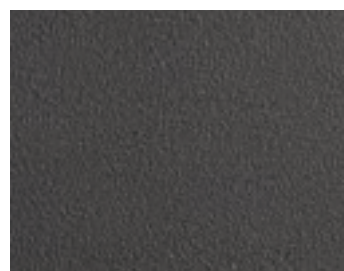
**M307** Testa di moro | Dark brown | Marron foncé | Dunkelbraun | Marrón oscuro | Темно-коричневый



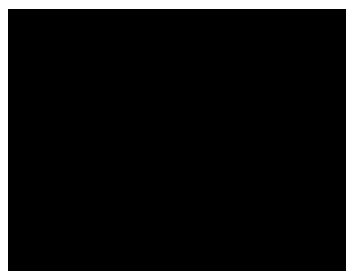
**M097** Grigio chiaro | Light grey | Gris clair | Hell grau | Gris claro | Светло-серый



**M089** Alluminio | Aluminium | Aluminium | Aluminium | Alumínio | Алюминий



**M310** Antracite | Anthracite | Anthracite | Anthrazit | Antracita | Антрацит



**M055** Nero | Black | Noir | Schwarz | Negro | Черный



**M028** Ottone scuro | Dark brass | Laiton foncé | Dunkelmessing | Latón oscuro | Темная латунь

## METALLO

METAL | MÉTAUX | METALLE | METAL | МЕТАЛЛЫ



**M326** Argento naturale | *Natural silver* |  
*Argent* | *Silber natur* | *Plata natural* |  
*Натуральное серебро*



**M325** Oro | *Gold* | *Or* | *Gold* | *Oro* | *Золото*



**M328** Ottone anticato | *Aged brass* |  
*Laiton vielli* | *Altmessing* |  
*Latón envejecido* | *Состаренная латунь*



**M327** Nero profondo lucido | *Glossy black* |  
*Noir brillant* | *Hochglänzend schwarz* |  
*Negro brillo* | *Глубокий черный глянцевый*



**M329** Oro rosa | *Rose gold* | *Or rosé* |  
*Rosegold* | *Oro rosa* | *Розовое Золото*