

FABRIC GROUP 3



DIVINA 3

Kvadrat
Design by Finn Sködt

COMPOSITION
100% new wool

DURABILITY
45.000 Martindale

LIGHTFASTNESS
5-7

PILLING
3

FIRE TESTS*
EN 1021-1/2
US Cal. Bull. 117-2013
BS 5852 Crib 5

SUSTAINABILITY
EU Ecolabel
Greenguard Gold
HPD
EPD

0173



*Find more tests and information at kvadrat.dk



DIVINA MELANGE 3

Kvadrat
Design by Finn Sködt

COMPOSITION
100% new wool

DURABILITY
45.000 Martindale

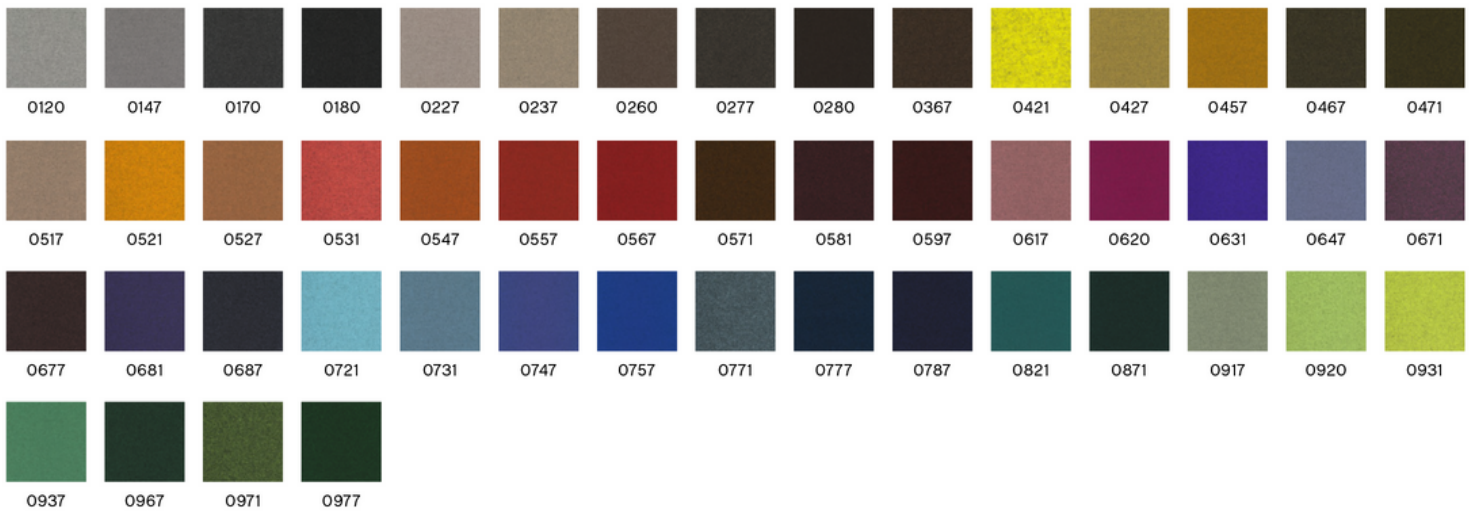
LIGHTFASTNESS
5-7

PILLING
3

FIRE TESTS*
EN 1021-1/2
US Cal. Bull. 117-2013
BS 5852 Crib 5

SUSTAINABILITY
EU Ecolabel
Greenguard Gold
HPD
EPD

0120



*Find more tests and information at kvadrat.dk

FABRIC GROUP 3



DIVINA MD

Kvadrat
Design by Finn Sködt

COMPOSITION
100% new wool

DURABILITY
45.000 Martindale

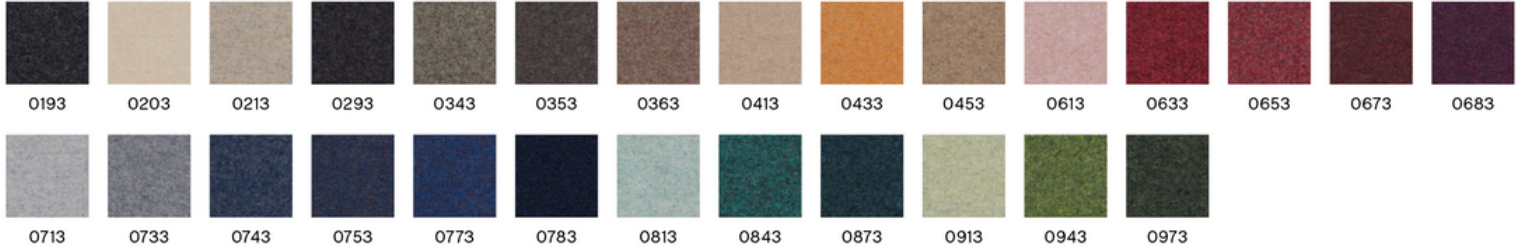
LIGHTFASTNESS
5-6

PILLING
3

FIRE TESTS*
EN 1021-1/2
US Cal. Bull. 117-2013
BS 5852 Crib 5

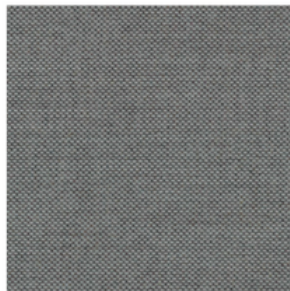
SUSTAINABILITY
EU Ecolabel
Greenguard Gold
HPD
EPD

0713



*Find more tests and information at kvadrat.dk

find more tests and information at kvadrat.uk



RE-WOOL

Kvadrat
Design by Margrethe Odgaard

COMPOSITION
45% Recycled wool,
45% New wool
(worsted), 10% Nylon

DURABILITY
100.000 Martindale

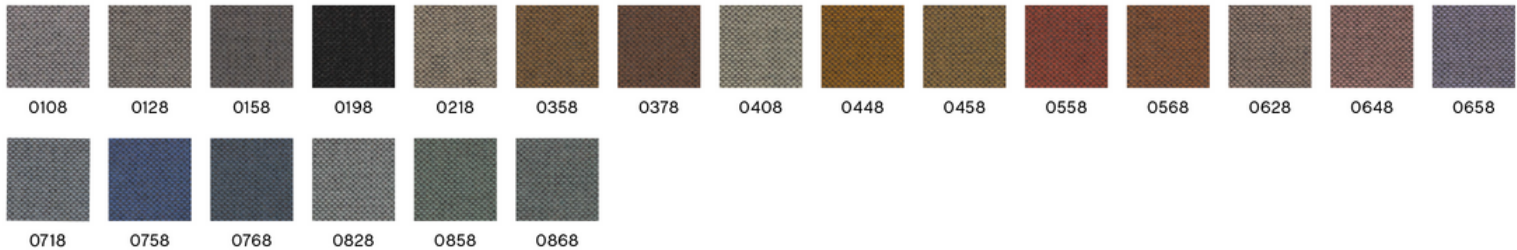
LIGHTFASTNESS
5-7

PILLING
4

FIRE TESTS*
EN 1021-1/2
US Cal. Bull. 117-2013
BS 5852 Crib 5 with
treatment

SUSTAINABILITY
EU Ecolabel
Greenguard Gold
HPD

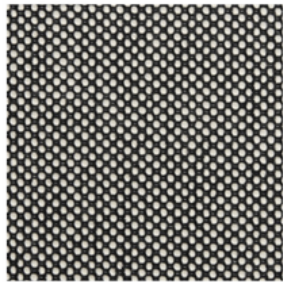
0828



*Find more tests and information at kvadrat.dk

Due to variations in computer screens, we cannot guarantee that the colours shown here are truly representative of the products.

FABRIC GROUP 3



DOT 1682

HAY

Wool Cotton Collection 2019

COMPOSITION

55% Wool,
45% Cotton

DURABILITY

50.000 Martindale

LIGHTFASTNESS

4-5

PILLING

4-5

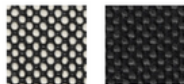
FIRE TESTS

EN 1021-1/2
US Cal. Bull. 117-2013

SUSTAINABILITY

OEKO-TEX®
STANDARD 100

02 Bianco/Nero



02 Bianco/Nero 03 Antracite



RODEN*

Romo

COMPOSITION

55% Viscose, 24%
Linen, 10% Cotton,
8% Polyester, 3%
Polyamide

DURABILITY

50.000 Martindale

LIGHTFASTNESS

5-6

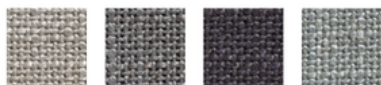
PILLING

2-3

FIRE TESTS

EN 1021-1/2
US Cal. Bull. 117-2013
BS 5852 Crib 5 with
treatment

04



04 05 06 08

*Only available in selected colours



RUSKIN*

Romo

COMPOSITION

70% Viscose, 15%
Linen, 10% Wool, 5%
Polyamide

DURABILITY

60.000 Martindale

LIGHTFASTNESS

5

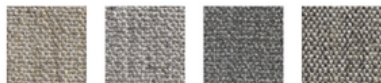
PILLING

3

FIRE TESTS

EN 1021-1/2
BS 5852 Crib 5 with
treatment

11



05 11 12 33

*Only available in selected colours