

FINITURE

I colori dei legni, delle laccature, dei tessuti e delle pelli presenti in questo catalogo sono suscettibili dei procedimenti di stampa. Fa fede il campionario dell'azienda. Ivano**Antonello**Italia®. si riserva la facoltà di modificare in qualunque momento e senza preavviso le caratteristiche tecniche (misure, finiture, tessuti e pelli) dei suoi prodotti.

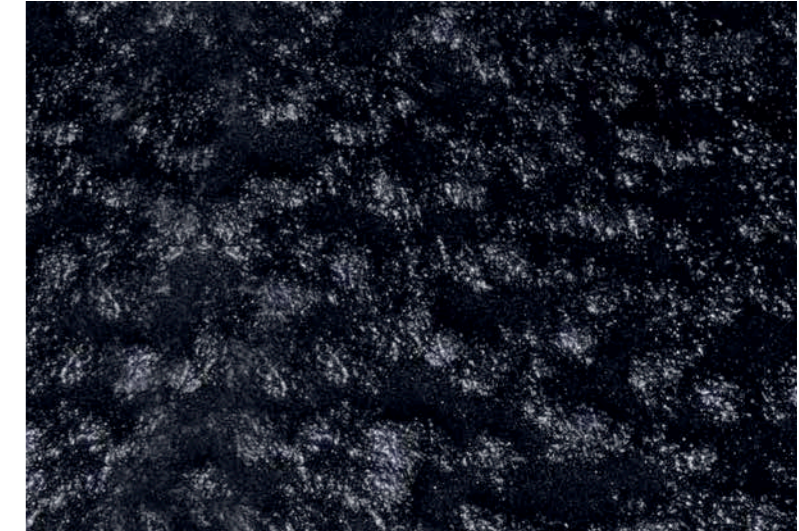
Wood, lacquer, fabric and leather colours are not binding and may vary due to printing. Please refer to the company sets of samples. Ivano**Antonello**Italia® reserves the right to modify the technical specifications of the products (sizes, finishes, leather and fabrics) featured in this catalogue at any time and without prior notice.

VETRO COTTO FORGIATO
FORGED ANNEALED GLASS

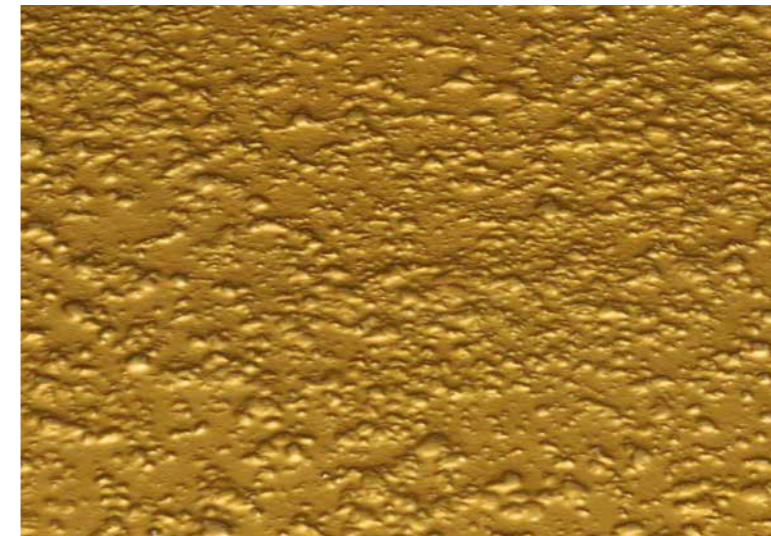
STANDARD VERSION



Bianco Brillante_Bright White



Nero Brillante_Bright Black

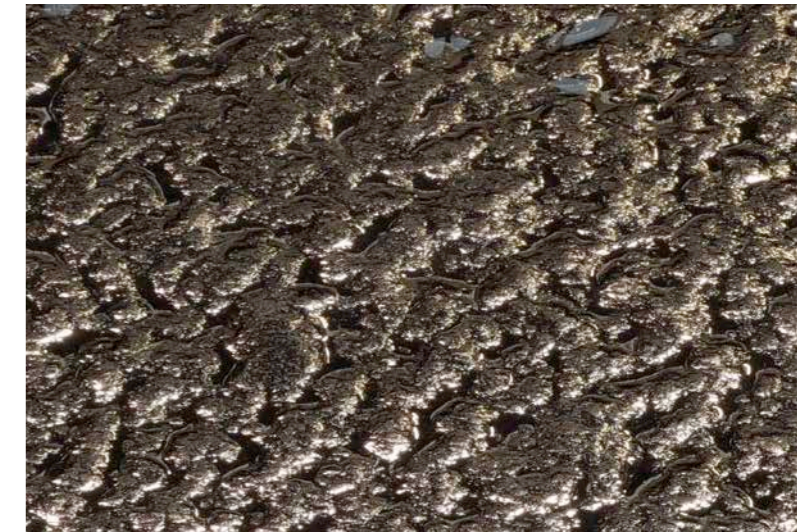


Oro Brillante_Bright Gold

LUXURY VERSION



Blu argentato_Blue with Silver back



Bronzo retro argentato_Bronze with Silver back

Essendo un vetro cotto forgiato un materiale naturale, potrebbe presentare caratteristiche estetiche e lievi differenze di colore.
Being a forged annealed glass a natural material, it may have aesthetic characteristics and slight differences in color.

CERAMICHE
CERAMICS



Calacatta Hermitage_Calacatta Hermitage



Royal Peacock Lux_Royal Peacock Lux



Calacatta Oro_Calacatta Gold



Zaha Stone_Zaha Stone



Noir Desire_Noir Desire



Emperador Extra_Eemperador Extra



Calacatta Luxe_Calacatta Luxe



Krater_Krater



Calacatta Extra Satin_Calacatta Extra Satin

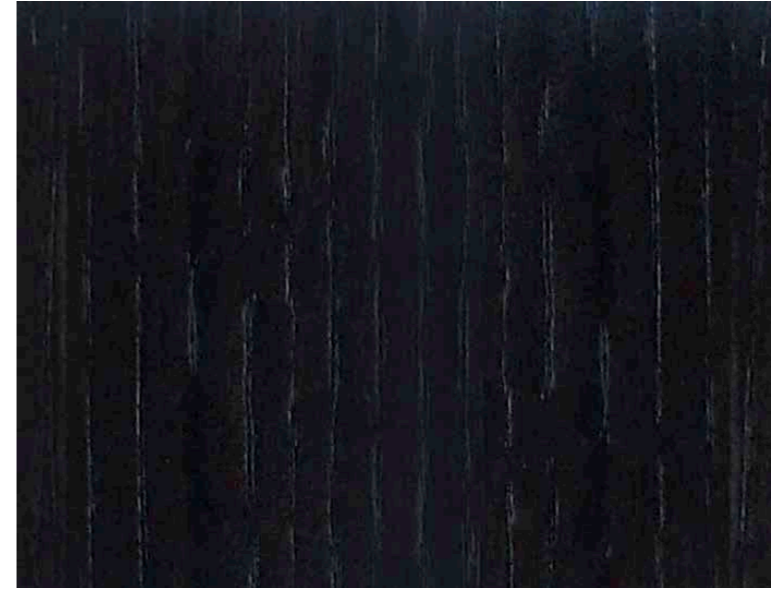


Sodalite Lux_Sodalite Lux



Statuario_Statuary

LEGNI E CERAMICHE
WOOD AND CERAMIC



Wengè_Wengè



Noce Canaletto_Canaletto Walnut



Rovere Patinato Grigio_Grey Oak



Rovere Naturale Vintage_Vintage Natural Oak

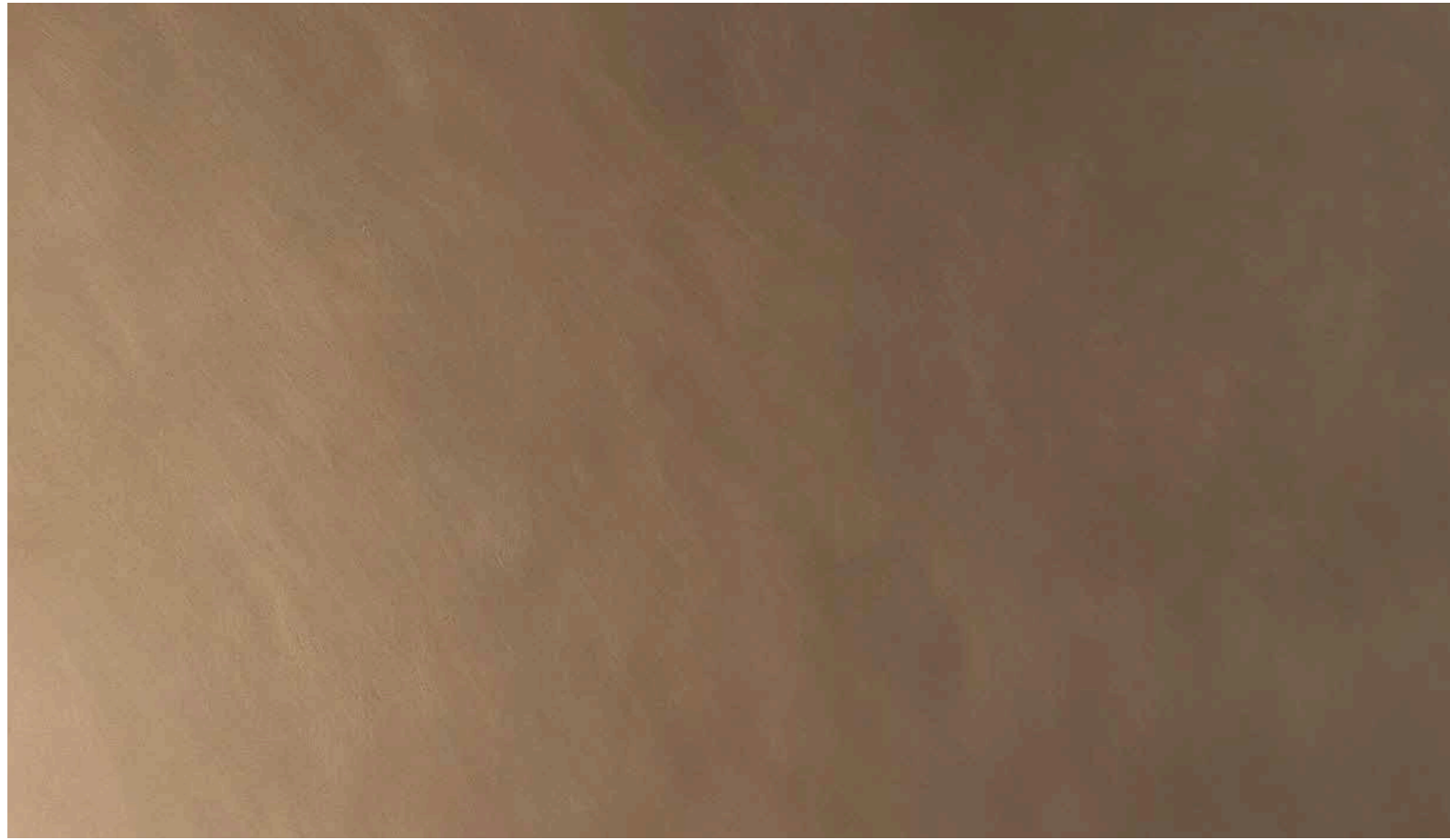


Rovere Affumicato_Smoked Oak



Rovere Naturale_Natural Oak

LEGNO CON EFFETTO METALLICO
WOOD WITH METAL EFFECT



Metal Bronze_Metal Bronze

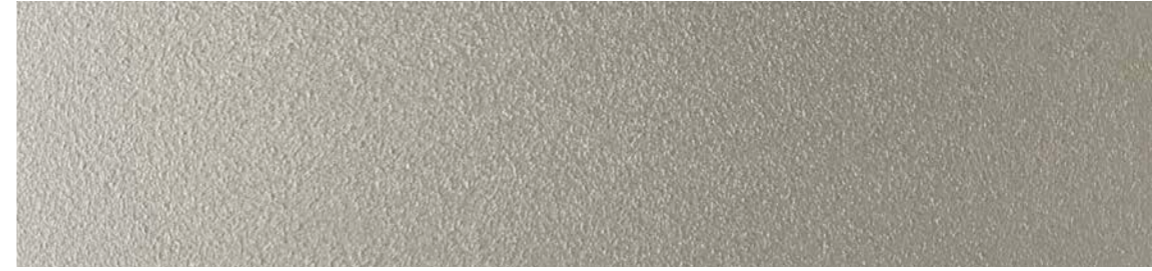


Metal Steel_Metal Steel

METALLO CON VERNICIATURA A POLVERE EPOSSIDICA
METAL WITH EPOXY PAINTED POWDER



Genere Opaco **M24**
Matt Ash Grey



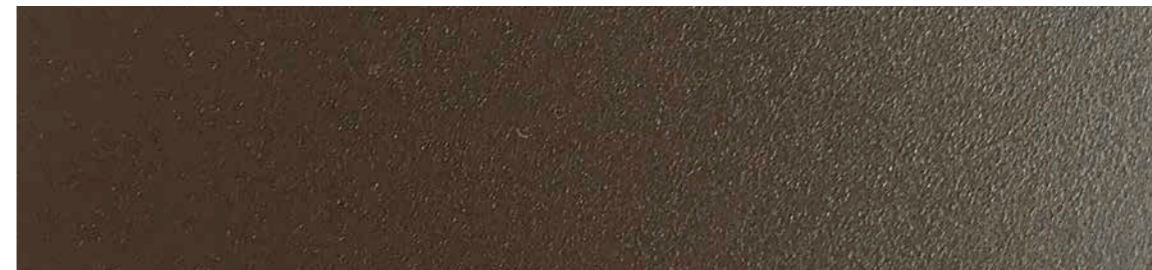
Quartz **M29**
Quartz



Rame **M32**
Copper

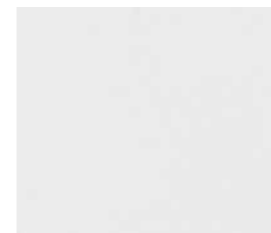


Titanio **M35**
Titanium

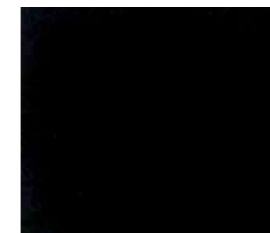


Bronzo Opaco **M38**
Matt Bronze

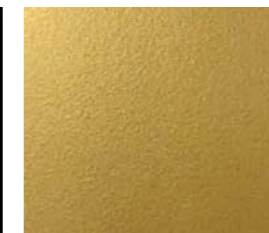
METALLI
METAL



Bianco Opaco **M10**
Matt White



Nero Opaco **M5**
Matt Black



Verniciato Oro Brillante **M40**
Bright Gold painted



Alluminio Anodizzato **M12**
Anodized Aluminium



Cromo Lucido **M14**
Shining Chrome

LACCATI LUCIDI
SHINING LACQUERED WOOD



Nero 1073
Black



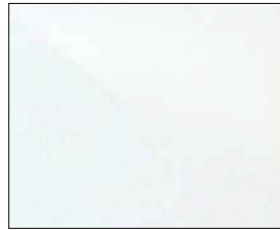
Grigio Scuro 1022
Dark Grey



Grigio Cenere 1033
Ash Grey



Grigio Chiaro 1030
Light Grey



Bianco 1071
White



Crema 1092
Cream



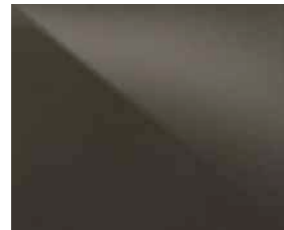
Tortora 1079
Dove Grey



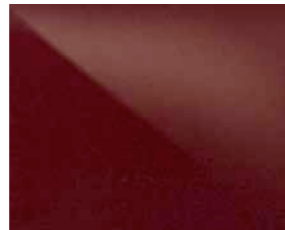
Fango 1006
Mud



Moka 1091
Dark Brown



Bronzo 1038
Bronze



Rosso 1089
Red

LACCATI OPACHI
MATT LACQUERED WOOD



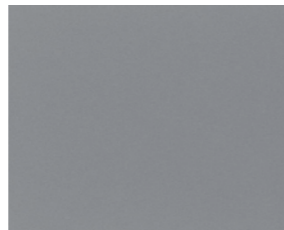
Nero 4073
Black



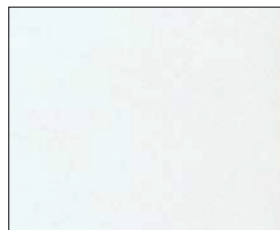
Grigio Scuro 4022
Dark Grey



Grigio Cenere 4033
Ash Grey



Grigio Chiaro 4030
Light Grey



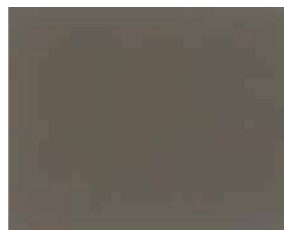
Bianco 4071
White



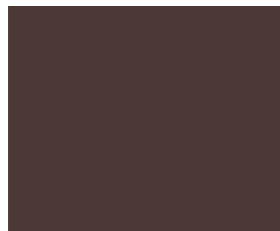
Crema 4092
Cream



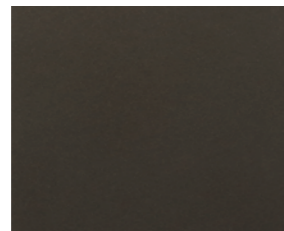
Tortora 4079
Dove Grey



Fango 4006
Mud



Moka 4091
Dark Brown



Bronzo 4038
Bronze



Rosso 4089
Red

CRISTALLI VERNICIATI LUCIDI
SHINING PAINTED GLASS



Nero 3073
Black



Grigio Scuro 3022
Dark Grey



Grigio Cenere 3033
Ash Grey



Grigio Chiaro 3030
Light Grey



Fumè 3022
Smoked Grey



Bianco 3071
White



Crema 3092
Cream



Tortora 3079
Dove Grey



Fango 3006
Mud



Moka 3091
Dark Brown



Bronzo 3038
Bronze



Rosso 3089
Red

CRISTALLI ACIDATI VERNICIATI OPACHI
MATT PAINTED SATINED GLASS



Nero 5073
Black



Grigio Scuro 5022
Dark Grey



Grigio Cenere 5033
Ash Grey



Grigio Chiaro 5030
Light Grey



Fumè 5022
Smoked Grey



Bianco 5071
White



Crema 5092
Cream



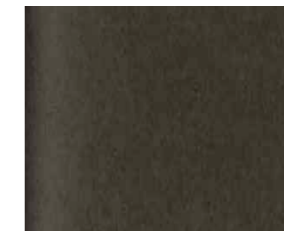
Tortora 5079
Dove Grey



Fango 5006
Mud



Moka 5091
Dark Brown



Bronzo 5038
Bronze

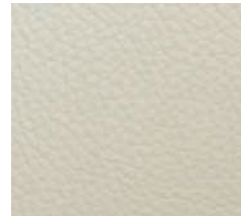


Rosso 5089
Red

PELLE
SOFT LEATHER



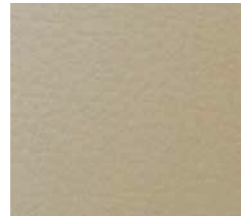
Bianco **A000**
White



Bianco Panna **A130**
Creamy White



Crema **A028**
Cream



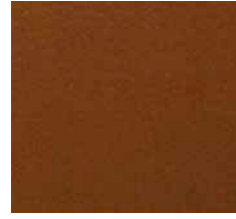
Avorio **A250**
Ivory



Tortora **A264**
Dove Grey



Giallo **A260**
Yellow



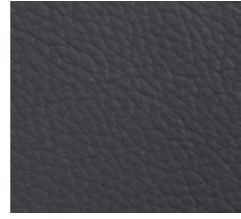
Naturale **A060**
Natural



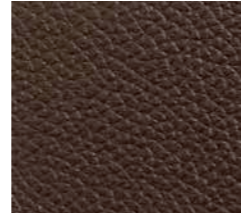
Perla **A033**
Pearl



Grigio Chiaro **A290**
Light Grey



Ardesia **A275**
Slate



Bronzo **A380**
Bronze



Marrone Chiaro **A278**
Light Brown



Ocra Bruno **A325**
Brown Ochre



Marrone **A340**
Brown



T. di Moro **A330**
Dark Brown



Arancione **A137**
Orange



Rosso **A090**
Red



Verde **A359**
Green



Avio **A315**
Aviation Blue



Nero **A150**
Black

ECOPELLE
SYNTHETIC LEATHER



Bianco **SI 01**
White



Crema **SI 02**
Cream



Avorio **SI 04**
Ivory



Giallo **SI 11**
Yellow



Tortora **SI 05**
Dove Grey



Fango **SI 26**
Mud



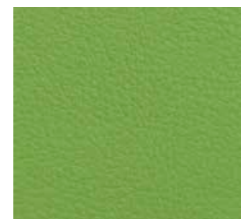
Marrone **SI 07**
Brown



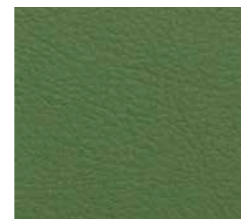
T. di Moro **SI 08**
Dark Brown



Rosso **SI 13**
Red



Verde **SI 17**
Green



Verde Oliva **SI 18**
Olive Green



Grigio Chiaro **SI 36**
Light Grey

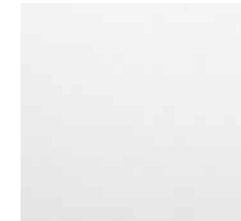


Grigio **SI 23**
Grey

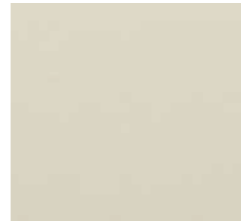


Nero **SI 24**
Black

CUOIO
HIDE LEATHER



Bianco **71**
White



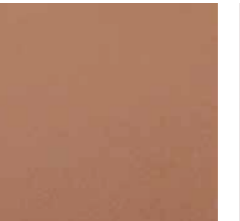
Latte **74**
Milk



Avorio **12**
Ivory



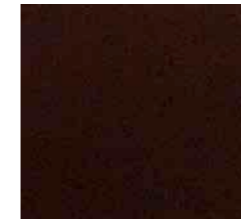
Tortora **79**
Dove Grey



Naturale **32**
Natural



Mattone **16**
Brick Red



Marrone **20**
Brown



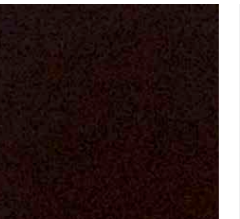
Argento **96**
Silver



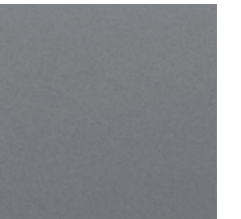
Bronzo **31**
Bronze



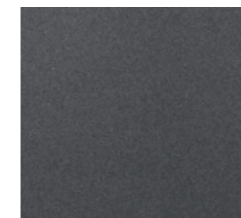
Ocra Bruno **38**
Brown Ochre



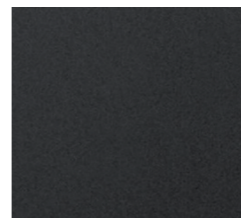
T. di Moro **91**
Dark Brown



Grigio Chiaro **30**
Light Grey



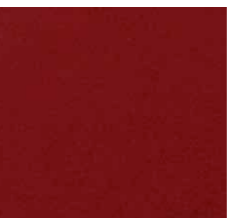
Grigio Piombo **37**
Lead Grey



Ardesia **26**
Slate



Nero **73**
Black



Rosso **89**
Red

- PULIZIA E MANUTENZIONE

Per la normale pulizia utilizzare solamente un panno morbido e asciutto. Eventuali macchie si possono eliminare agendo con un panno umido e utilizzando prodotti neutri. Non usare solventi (es. alcool). Solo per macchie più resistenti utilizzare prodotti specifici per la pelle facendo inizialmente una prova in una zona non visibile per verificarne l'efficacia.

Attenzione: i colori dei campionari sono indicativi e si possono riscontrare lievi tolleranze tra i campioni ed i prodotti finiti.

- CLEANING AND MAINTENANCE

Dust with a soft and dry cloth for the normal clearing. Any stains can be removed with a wet cloth and using delicate products. Do not use solvents (i.e. alcohol). Only for more resistant stains use specific products for the soft leather making an initially test on a not visible area to verify its effectiveness.

Warning: since the samples colors are indicative, you can find light tolerances between samples and final products.

- NETTOYAGE ET ENTRETIEN DU CUIR

Pour un nettoyage normal, n'utiliser qu'un chiffon doux et sec. Les éventuelles tâches peuvent s'enlever à l'aide d'un tissu humide et en utilisant des produits neutres. Ne pas utiliser de solvants (par exemple alcool). Pour les taches les plus résistantes, utiliser des produits spécifiques pour le cuir en ayant auparavant fait un test sur une zone non apparente pour en vérifier l'efficacité.

Attention: les couleurs des échantillons ne sont qu'indicatives et des légères différences peuvent apparaître entre les échantillons et les produits finis.

- LIMPIEZA Y MANTENIMIENTO

Para su limpieza, utilizar un paño de algodón seco. Para otras manchas, utilizar un paño mojado y productos neutros. Nunca utilizar disolventes (por ejemplo el alcohol). Solo para manchas mas difíciles emplear productos específicos para la piel haciendo una prueba inicial sobre una zona no visible para verificar la eficacia.

Atencion: los colores del muestrario son indicativos y pueden tener muy ligeras variaciones entre la muestra y el producto finido.

- LEDERPFLEGE

Benutzen ein weiches und trockenes Tuch für die normale Reinigung. Stärke Flecke müssen mit einem Neutralprodukt behandelt und mit einem sauberen Tuch nachgerieben. Benutzen Sie kein Lösungsmittel (z.B. Alkohol). Nur für mehr widerstandsfähige Flecke gebrauchen spezifische Produkte für das weiche Leder, das zuerst Test auf nicht sichtbares Gebiet macht, um sein Wirksamkeit nachzuprüfen.

Achtung: Die Musterfarben sind ungefähr und es können leichte Toleranzen zwischen Musterfarben und den fertigen Waren auftreten.

- L'ecopelle è un prodotto Made in Italy e ha superato le sottoelencate prove per la resistenza alla fiamma secondo gli standard europei.

EN 1021-2/93-BS 5852-1/79-BS 5852/90 Sezione 4-crib5

UNI 9175/87 E 9175 FA-1/94 CLASSE 1.IM

- The synthetic leather is a Made in Italy product and it passed the here below tests concerning the fire resistance according to the European standards.

EN 1021-2/93-BS 5852-1/79-BS 5852/90 Section 4-crib5

UNI 9175/87 E 9175 FA-1/94 CLASS 1.IM

- Le cuir mince synthétique est un produit Made in Italy et a passé les tests de résistance au feu selon les normes européennes (ci-dessous indiqués).

EN 1021-2/93-BS 5852-1/79-BS 5852/90 Section 4-crib5

UNI 9175/87 E 9175 FA-1/94 CLASSE 1.IM

- La piel sintética es un producto Made in Italy que ha superado las pruebas que se enumeran a continuación de resistencia a la llamas según las normas europeas.

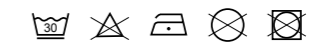
EN 1021-2/93-BS 5852-1/79-BS 5852/90 Sección 4-CRIB5

UNI 9175/87 E 9175 FA-1/94 CLASE 1.IM

- Das synthetische Weichleder ist ein Produkt Made in Italy und hat die unten genannten Prüfungen für Flammwidrigkeit nach europäischen Standards bestanden.

EN 1021-2/93-BS 5852-1/79-BS 5852/90 Abschnitt 4-CRIB5

UNI 9175/87 E 9175 FA-1/94 CLASS 1.IM



SMART CAT. A
SMART CAT.A

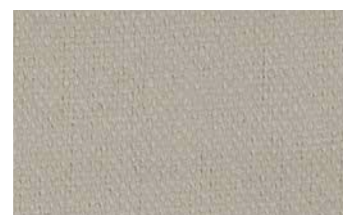
90% CO 10% AF
Idrorepellente / Water repellent _ Antimacchia / Stain - Resistant _ Traspirante / Transpirant



CT 33 A
Crema
Cream



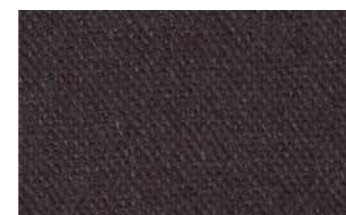
CT 17 A
Bianco
White



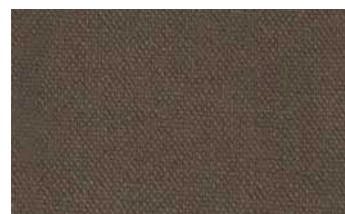
CT 08 A
Beige
Beige



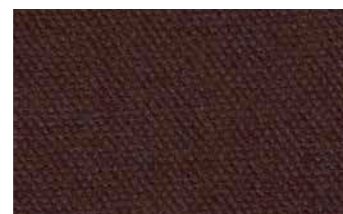
CT 39 A
Tortora
Dove Grey



CT 47 A
Tabacco
Tobacco Brown



CT 44 A
Cammello
Camel



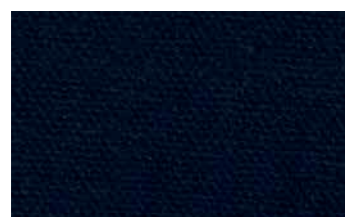
CT 43 A
Marrone
Brown



CT 28 A
T. di Moro
Dark Brown



CT 67 A
Glicine
Wisteria



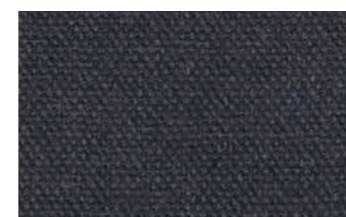
CT 15 A
Blu
Blue



CT 02 A
Azzurro
Light Blue



CT 37 A
Grigio Chiaro
Light Grey



CT 05 A
Grigio Scuro
Dark Grey



CT 07 A
Nero
Black



Tessuti certificati ECO-FRIENDLY.
Questa certificazione vi offre la garanzia che tutti i tessuti da noi utilizzati sono prodotti nel più totale rispetto delle normative vigenti, seguendo dei rigidi parametri eco-sostenibili e non nocivi per l'uomo e gli animali.

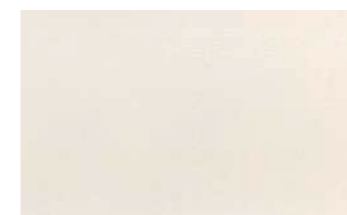
ECO-FRIENDLY certified fabrics.
This certificate guarantee that all the fabrics we use are produced following all the lows concerning environmental protection and people's health.

NOBILBOND 799 CAT. B
NOBILBOND 799 CAT. B

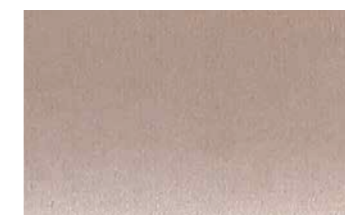
100% PL
Idrorepellente / Water Repellent



205
Fumo
Smoke



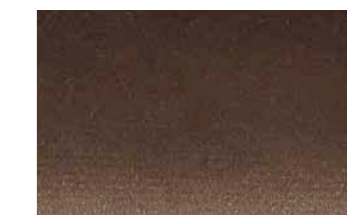
01
Bianco
White



104
Crema
Cream



130
Cachi
Khaki



100
Tronco
Trunk



2100
Bistrot
Bistrot



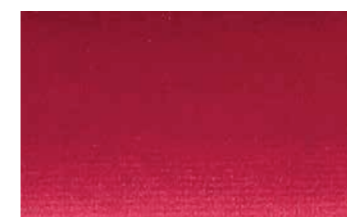
13
Felce
Fern



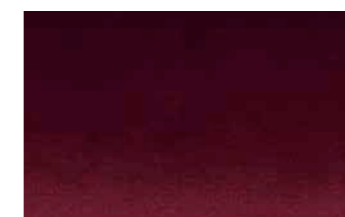
105
Mandarino
Tangerine



07
Ruggine
Rust



09
Rosso
Red



90
Amaranto
Reddish purple



615
Salmone
Salmon



23
Rosa
Pink



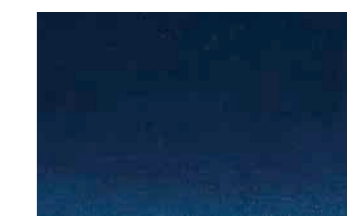
19
Pervica
Pervica



15
Petrolio
Petroleum



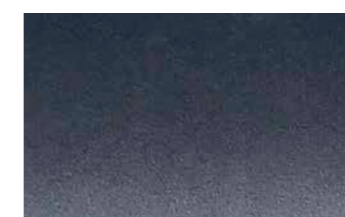
26
Zafferano
Saffron



14
Acquamarina
Aquamarine



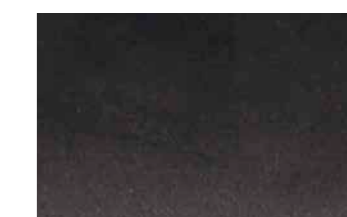
16
Avio
Avio



617
Ardesia
Slate



27
Grigio
Grey

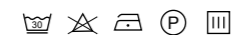


18
Nero
Black

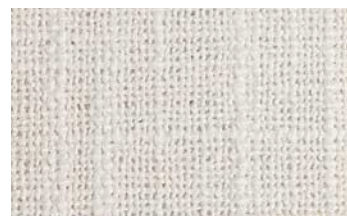
GRUMELLO 457 CAT. B

GRUMELLO 457 CAT. B

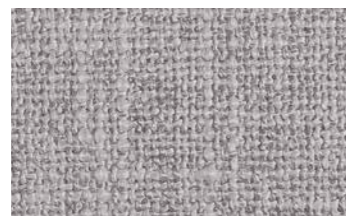
100% PL
Idrorepellente / Water Repellent



130
Biscotto
Biscuit



01
Natur
Natur



19
Sabbia
Sand



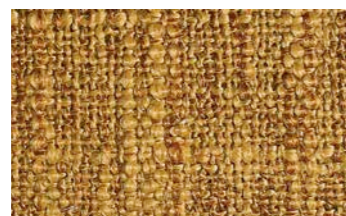
27
Tortora
Turtledove



616
Perla
Pearl



205
Cenere
Ash grey



26
Zafferano
Saffron



617
Fumo
Smoke



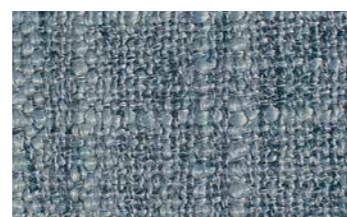
23
Rosa
Pink



80
Lavanda
Lavender



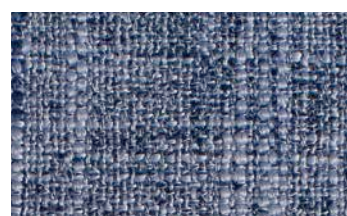
21
Polvere
Dust



17
Palude
Swamp



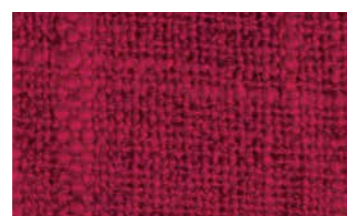
16
Denim
Denim



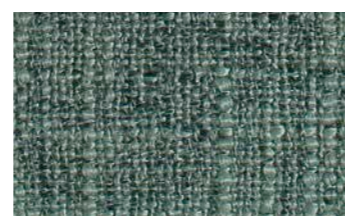
15
Avio
Avio



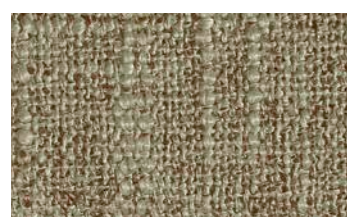
07
Carota
Carrot



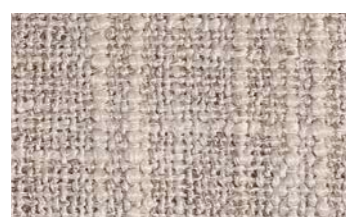
10
Rosso
Red



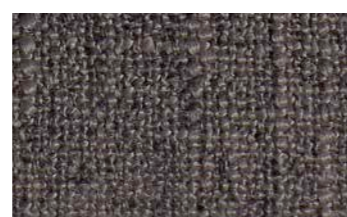
56
Felce
Fern



12
Pisello
Peal



20
Beige
Beige

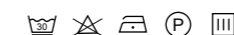


18
Fango
Mud

GRANADA 458 CAT. B

GRANADA 458 CAT. B

100% PL
Idrorepellente / Water Repellent



205
Famgo
Mud

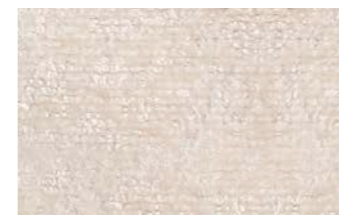


Tessuti certificati ECO-FRIENDLY.
Questa certificazione vi offre la garanzia che tutti i tessuti da noi utilizzati sono prodotti nel più totale rispetto delle normative vigenti, seguendo dei rigidi parametri eco-sostenibili e non nocivi per l'uomo e gli animali.

ECO-FRIENDLY certified fabrics.
This certificate guarantee that all the fabrics we use are produced following all the lows concerning environmental protection and people's health.



20
Sabbia
Sand



01
Natur
Natur



19
Ghiaccio
Ice



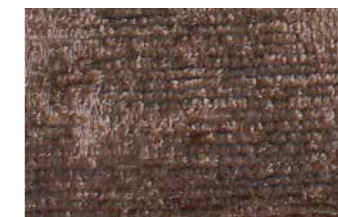
104
Beige
Beige



130
Corda
Rope



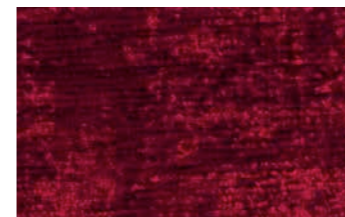
12
Pisello
Pea



100
Camoscio
Chamois



07
Arancio
Orange



10
Rosso
Red



90
Prugna
Plum



23
Viola
Violet



14
Blu
Blue



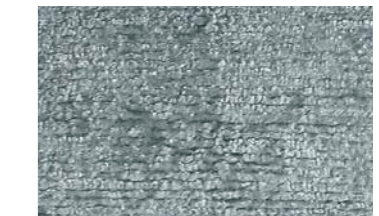
615
Rosa
Pink



56
Palude
Swamp



15
Ottanio
Teal



17
Avio
Avio



16
Notte
Night



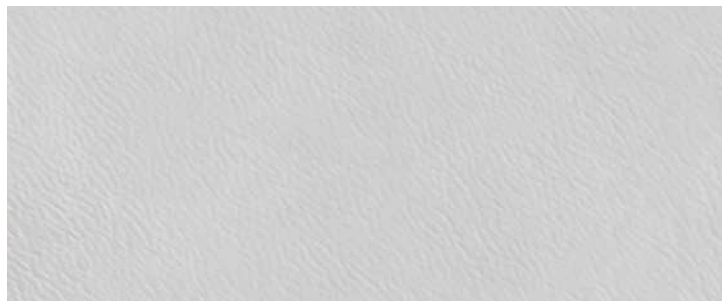
616
Tortora
Turtledove



180
Antracite
Anthracite

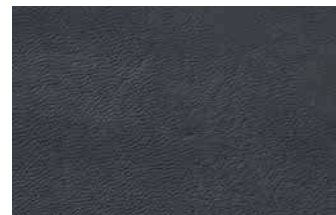


26
Giallo
Yellow



RE 13 B

Avorio
Ivory



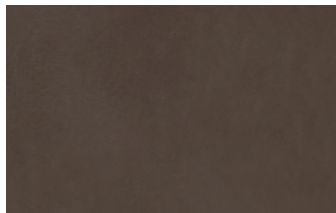
RE 792 B

Grigio Scuro
Dark Grey



RE 195 B

Sabbia
Sandy



RE 975 B

Tortora
Dove Grey



RE 954 B

Oliva
Olive



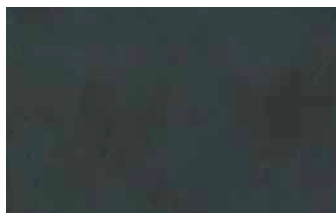
RE 100 B

Tabacco
Tobacco



RE 888 B

Testa di Moro
Dark Brown



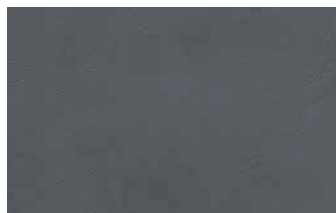
RE 290 B

Bosco
Forrest Green



RE 112 B

Avio
Avio



RE 970 B

Grigio Chiaro
Light Grey

Tessuti idrorepellenti e antimacchia

Le moderne tecniche costruttive ci permettono di avere tessuti formati da filati con fibre finissime (dette microfibre) che intrecciate tra loro conferiscono una eccezionale robustezza. La caratteristica di Antimacchia ne deriva dal fatto che lo sporco non attecchisce al filato e può essere rimosso con la semplice smacchiatura. Il trattamento Idrorepellente non permette ai liquidi e macchie di penetrare nelle fibre mantenendo la caratteristica traspirante del tessuto e aumentandone la facilità di eliminare le macchie. Tutto ciò si traduce in massima praticità, confort e durata.

Fabrics water-repellent and stain-resistant

The modern construction techniques allow us to get fabrics composed by yarns with very thin fibres (called microfibriles) giving an exceptional strength when interwoven among them. Thanks to their characteristic of stain-resistant, the dirty doesn't penetrate into the yarn and can be removed with a simple stain removing. The water-repellent treatment doesn't allow the liquids and stains to penetrate in the fibres, maintaining anyway the transpiring characteristic of the fabric and increasing the facility to remove the stains. All this means maximum practicality, comfort and duration.

Simboli di lavaggio

- | | |
|--|---|
| Lavaggio a macchina alla temperatura indicata | Non candeggiare |
| Stirare a bassa temperatura (max 110°) | Stirare a media temperatura (max 150°) |
| Il prodotto tessile non sopporta l'asciugatura in tamburo | Lavaggio a secco con tutti i solventi escluso la trielina |
| Asciugatura in posizione verticale (appeso) del prodotto tessile intriso d'acqua, cioè senza spremitura e/o centrifuga | Il prodotto tessile sopporta l'asciugatura in tamburo a temperatura ridotta |

Washing symbols

- | | |
|--|---|
| Machine washing at the indicated temperature | Do not bleach |
| Ironing at low temperature (max 110°) | Ironing at medium temperature (max 150°) |
| Do not dry by means of tumble dryer | Dry cleaning with all solvents except for trichloroethylene |
| Drying in vertical position (hanging) soaked in water, it means without squeezing and/or spin-drying | Drying by tumble dryer at reduced temperature allowed |

Norme di smacchiatura per tessuti idrorepellenti

Caffè, Latte, The: tamponare con carta assorbente. Quindi eliminare la macchia con panno imbevuto con acqua e sapone neutro. Se la macchia persiste strofinare con tampone imbevuto con alcool denaturato. **Inchiostro, Biro:** assorbire con carta assorbente e poi trattare con panno imbevuto con trielina o alcol denaturato. **Olio e Grasso:** tamponare con carta assorbente. Eliminare la macchia con tampone imbevuto con trielina o percloroetilene. **Vino e Liquore:** assorbire prima con carta assorbente. Eliminare la macchia con tampone imbevuto con alcol denaturato. **Erba e Marmellata:** Tamponare con acqua. Per eliminare eventuali aloni strofinare con carta assorbente e ripetere il trattamento con panno imbevuto con alcol denaturato.

Rules of stain removing for water-repellent fabrics

Coffee, Milk, Tea: tampon with blotting paper. Then remove the stain using a cloth soaked in water and neutral soap. If the stain persists, scrub using a pad soaked in denatured alcohol. **Ink, Ballpoint:** absorb using blotting paper and then treat using a cloth soaked in trichloroethylene or denatured alcohol. **Oil and Greasy:** tampon with blotting paper. Remove the stain with a pad soaked in trichloroethylene or perchloroethylene. **Wine and Liqueur:** absorb using a blotting paper. Remove the stain using a blotting pad soaked in denatured alcohol. **Grass and Jam:** tampon with water. Scrub using blotting paper for removing possible halos and repeat the treatment using a cloth soaked in denatured alcohol.

Essendo un vetro cotto forgiato un materiale naturale, potrebbe presentare caratteristiche estetiche e lievi differenze di colore.
Being a forged annealed glass a natural material, it may have aesthetic characteristics and slight differences in color.

Nessuna parte di questo catalogo, testo o fotografia può essere riprodotta o trasmessa in qualsiasi forma o tramite mezzo elettronico o meccanico, comprese le fotocopie, senza previo permesso scritto da parte della società IvanoAntonelloItalia®.
No part of this catalogue, text or photograph may be reproduced or transmitted in any shape or form, through electronic or paper-based communication, including photocopies, without the prior express written consent of IvanoAntonelloItalia®.

I prodotti
IvanoAntonelloItalia®
sono garantiti
100% Made in Italy.

IvanoAntonelloItalia®
products are
100% Made in Italy
guaranteed.